

RIVERSCAPE

The Forshaw 大楼







THE FORSHAW 大楼

Riverscape是首都最环保、交通最便利的河畔开发项目之一。其靠近交通枢纽，包括伊丽莎白线的**Custom House**站台和皇家码头独有的泰晤士河快艇码头，使得居民在伦敦和当地区域旅行和探索变得轻松自在。**Riverscape**是充满活力的皇家船码头社区的一部分，这里拥有自己的高街、定期举行的农夫市集、小学、健身房和天空酒廊，居民们在这里既可以享受泰晤士河畔的美景，又沉浸在自然中。

The Forshaw大楼坐落在这个河畔社区的中心位置。这个位置完美地将Riverscape的私人庭院与郁郁葱葱的景观以及Lyle公园的绿地连接在一起。

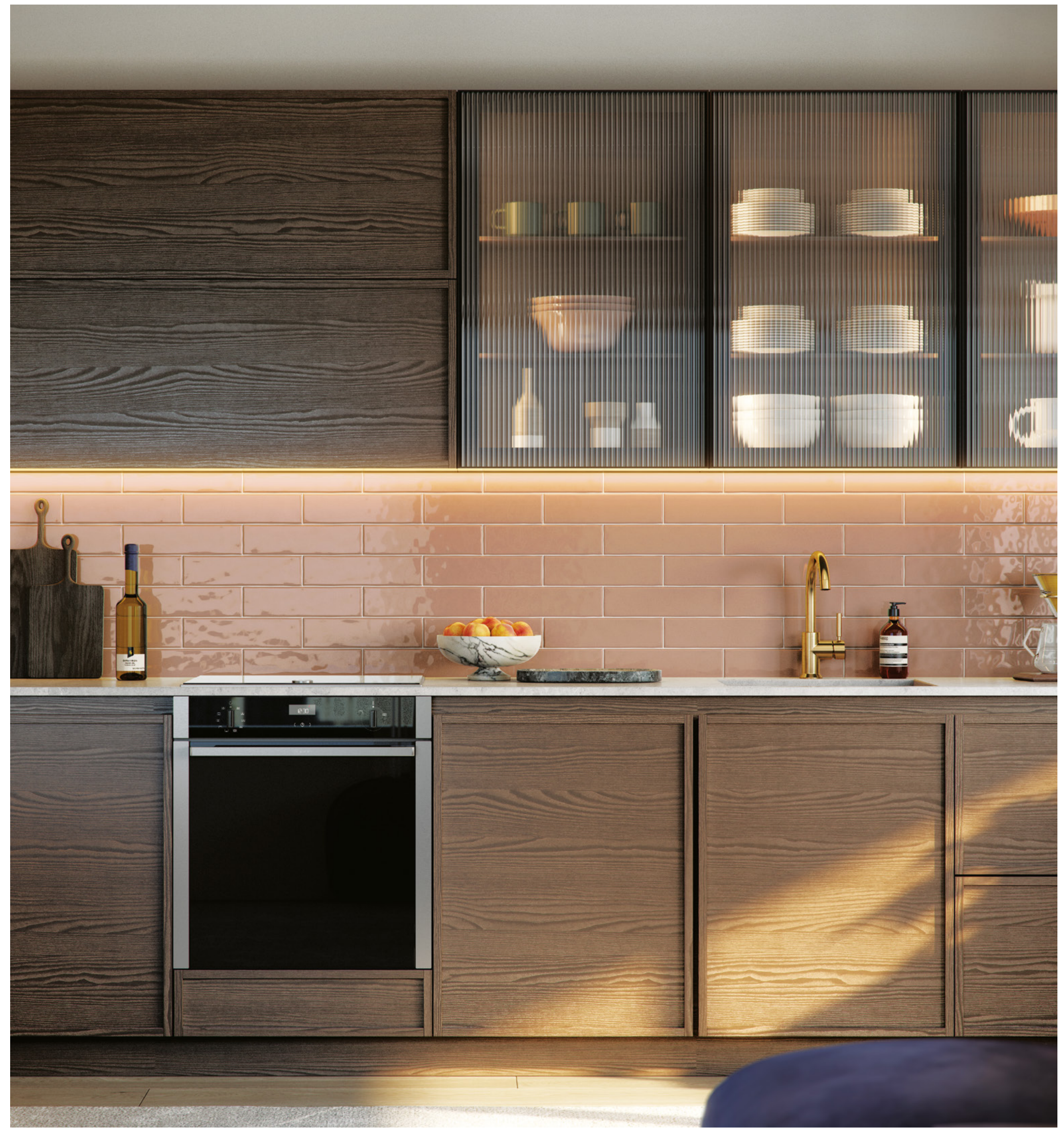
公寓楼比邻公园的一侧，河畔周边的自然光线透过宽敞的落地窗和阳台映射到房间里，创建一个放松与休闲的完美场所。



公寓以宽敞的开放式生活空间和宽大的落地窗为特色。



精致的手工制作带有其独特的个性，
呼应并延续了当地的文化遗产。



微微波纹的瓷砖和凹槽玻璃厨柜
折射出柔和的光线。自然木质饰面以
Lyle Park的开放式空间作为灵感。



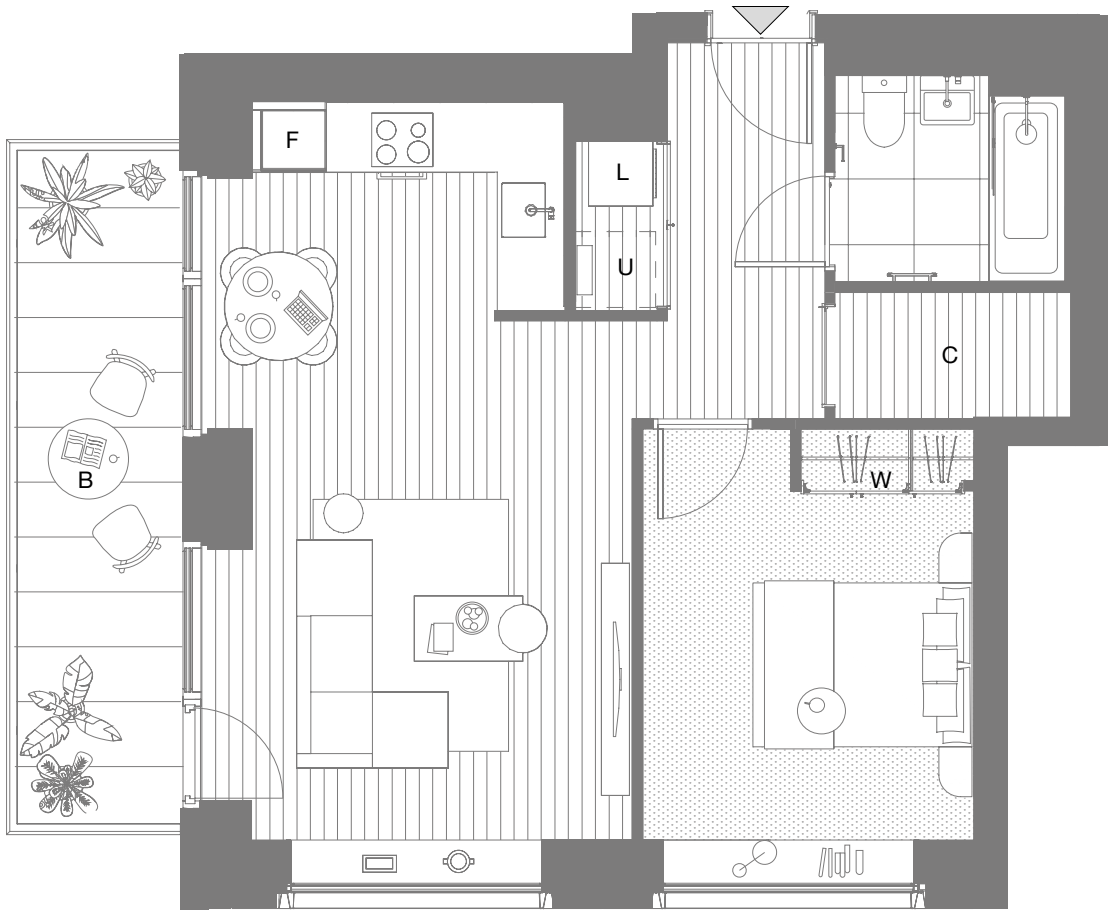
宽敞的阳台可享受户外用餐、休闲放松
或在美酒的陪伴下欣赏迷人的落日余晖。





布局空间灵活, 适合现代生活的需求。

TYPICAL ONE BED 典型的一居室



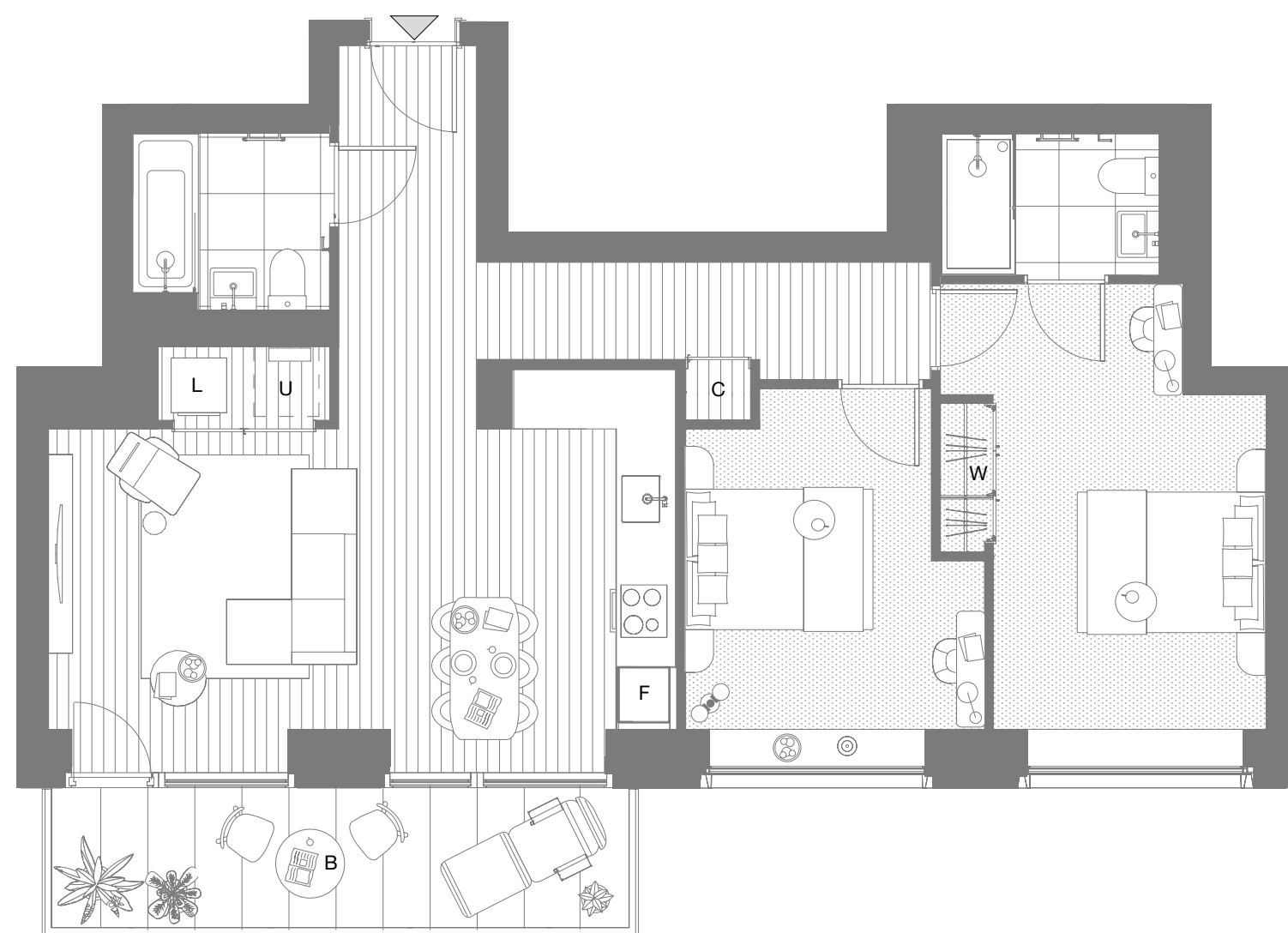
INTERNAL AREA 室内
51.9 sq m / 559 sq ft

**KITCHEN/DINING AREA
& LIVING ROOM**
厨房/用餐区 & 起居室
6800 x 3950 mm
BEDROOM 卧室
3800 x 3050 mm

BALCONY 阳台
9.5sq m / 102 sq ft

TYPICAL TWO BED

典型的两居室



INTERNAL AREA 室内
75.9 sq m / 817 sq ft
**KITCHEN/DINING AREA &
LIVING ROOM 厨房/用餐区 & 起居室**
6750 x 3700 mm

BEDROOM 1 卧室一
4800 x 3500 mm
BEDROOM 2 卧室二
3650 x 3200 mm

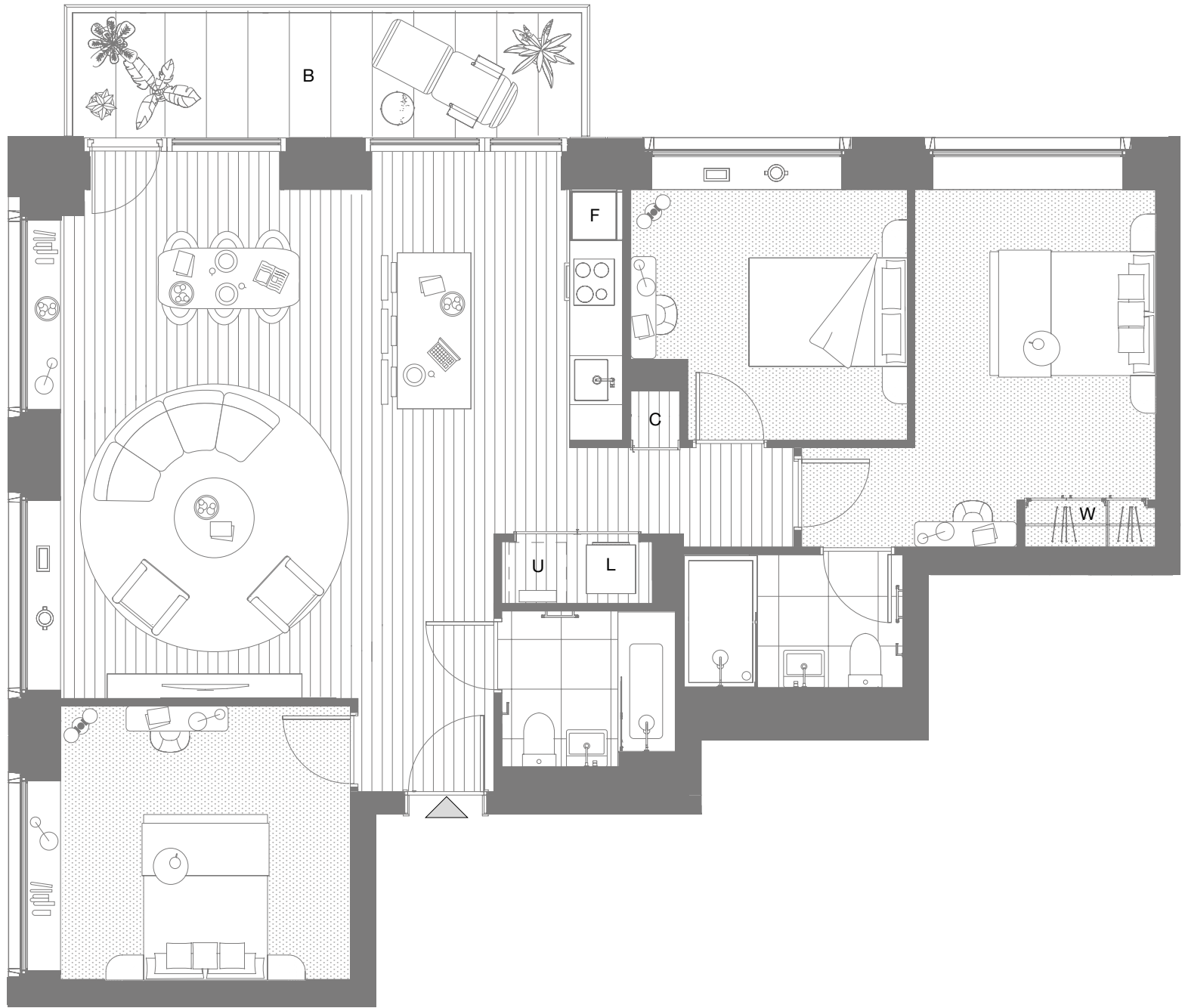
BALCONY 1 阳台一
9.5 sq m / 102 sq ft

提供最大的灵活性——第二间卧室可
用作托儿所、书房或客房。



非常适合于大型家庭——三居室公寓为那些需要足够的成长空间及喜欢娱乐活动的家庭提供舒适的空间。

TYPICAL THREE BED 典型的三居室



INTERNAL AREA 室内
96.4 sq m / 1038 sq ft
**KITCHEN/DINING AREA
& LIVING ROOM**
厨房/用餐区 & 起居室
6850 x 6650 mm

BEDROOM 1 卧室一
4350 x 2950 mm
BEDROOM 2 卧室二
3340 x 3300 mm

BEDROOM 3 卧室三
3340 x 3050 mm
BALCONY 1 阳台一
9.5 sq m / 102 sq ft



宽大的落地窗让泰晤士河流与公园周围的自然光线洒满了整个房间。



经典的现代美学设计, 旨在让起居与用餐空间最大化。



ON YOUR DOORSTEP

一切生活所需近在咫尺

您公寓外的所有便民设施构建了这个完美的社区，让居民体验到一个真实的归属感。**Riverscape**是皇家码头成熟和繁荣社区的一部分。**TheClubhouse**会所拥有健身房、水疗中心和长达**25**米的泳池；物业还配备礼宾服务以及每天**24**小时全天候的保安；社区内有一所优秀的小学——皇家码头小学和**Nest**幼儿园，还有牙医，药房，商店和特色酒吧，您生活所需的一切就在您的家门口。

Riverside Lifestyle 河畔生活方式

Riverscape位于东伦敦泰晤士河与Lyle公园交汇处，周围被广阔的绿地和青翠的树林所环绕，使其成为首都最环保、交通最便利的河畔开发项目之一。Riverscape临水而立，朝阳的河畔环境使别具风情。位于河流蜿蜒的拐点处，可欣赏变幻莫测的河畔风光，极目望去O2和金丝雀码头的天际线一览无余。Riverscape的精致建筑与绿草如茵的园林景观及水天一色的宽阔水域构成了一幅绝美的画面。您虽位于城市的边缘，却已经融入到大自然田园风光之中。



Verdant Landscaping 绿意盎然的景观设计

毗邻的Lyle公园是一块真正的瑰宝——伦敦传统的公园模式，树木枝繁叶茂、葱葱郁郁——Riverscape的园林景观因制宜，将现有的树木、开阔的绿色空间以及季节性植物的缤纷色彩，错落有致的搭配在一起，给人们带来意想不到的惊喜。从纽约中央公园周围的住宅楼及曼哈顿海滨前沿的炮台公园中汲取灵感，Riverscape 园林景观的整合是河畔生活体验的重要组成部分，打造了一个河流与公园完美地融合的画卷，宛若凭海临般地令人心旷神怡。



The Sky Lounge 空中休闲室

17楼的空中休闲室是Riverscape居民的专属空间，那里是家的延续，为居民提供聚会、社交及未来合作与发展的空间，这里也是与志趣相投的邻居间交流感情的完美场所。同时还可以俯瞰泰晤士河的美景并欣赏金融城靓丽的风景线。



The Clubhouse 会所

Riverscape的居民自动成为皇家码头所有便民设施的会员，包括享用The Clubhouse会所。会所配有25米长泳池、水疗池、最先进的训练设备和专门定制的训练课程。



The Clubhouse 会所

健康与健身是我们的重中之重。The Clubhouse 会所是东伦敦最大的居民专用休闲空间之一。

The Clubhouse Key

- 1

Spa Pool
- 2

Sauna
- 3

Steam Room
- 4

Experience Shower
- 5

Changing Room Entrance
- 6

25 Metre Pool
- 7

Relaxation Area
- 8

Reception
- 9

Café
- 10

Cardio Area
- 11

Weights Area
- 12

Resistance Area
- 13

Spinning Room
- 14

Studio



High Street 高街

皇家码头的主广场和高街上错落有致的商家与便民设施极其便利。包括牙医诊所和药房，还有一家很棒的当地酒吧，时尚品牌店，杂货店，高端美甲店，河畔餐厅、酒吧和咖啡馆，周末还有热闹的农贸市场。



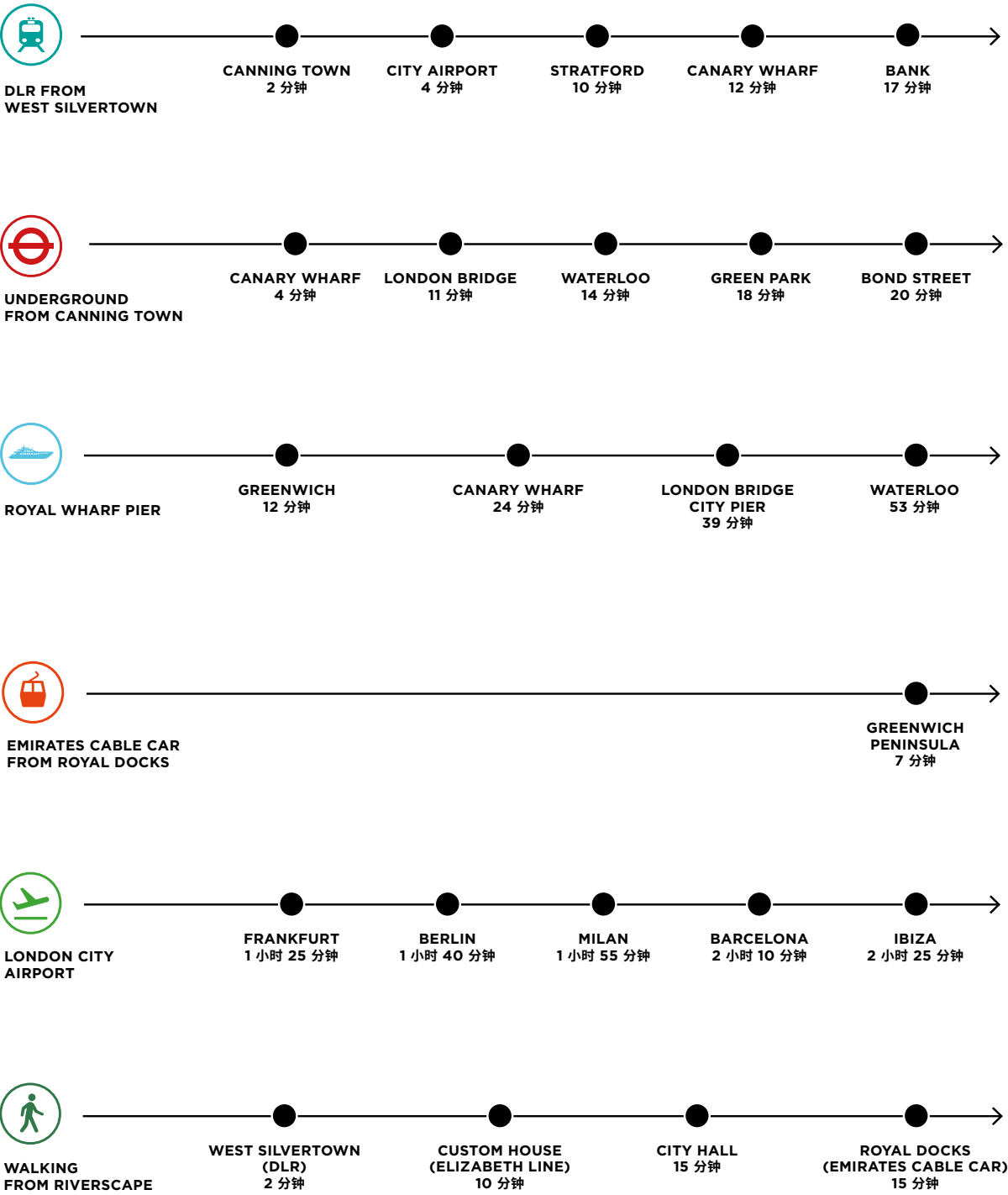
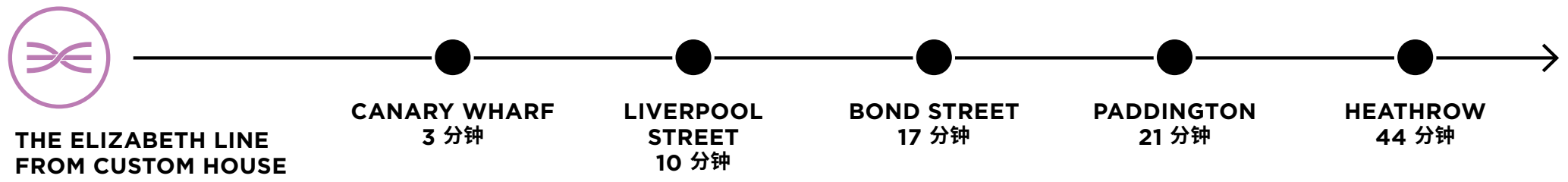
Play & Grow 玩耍与成长

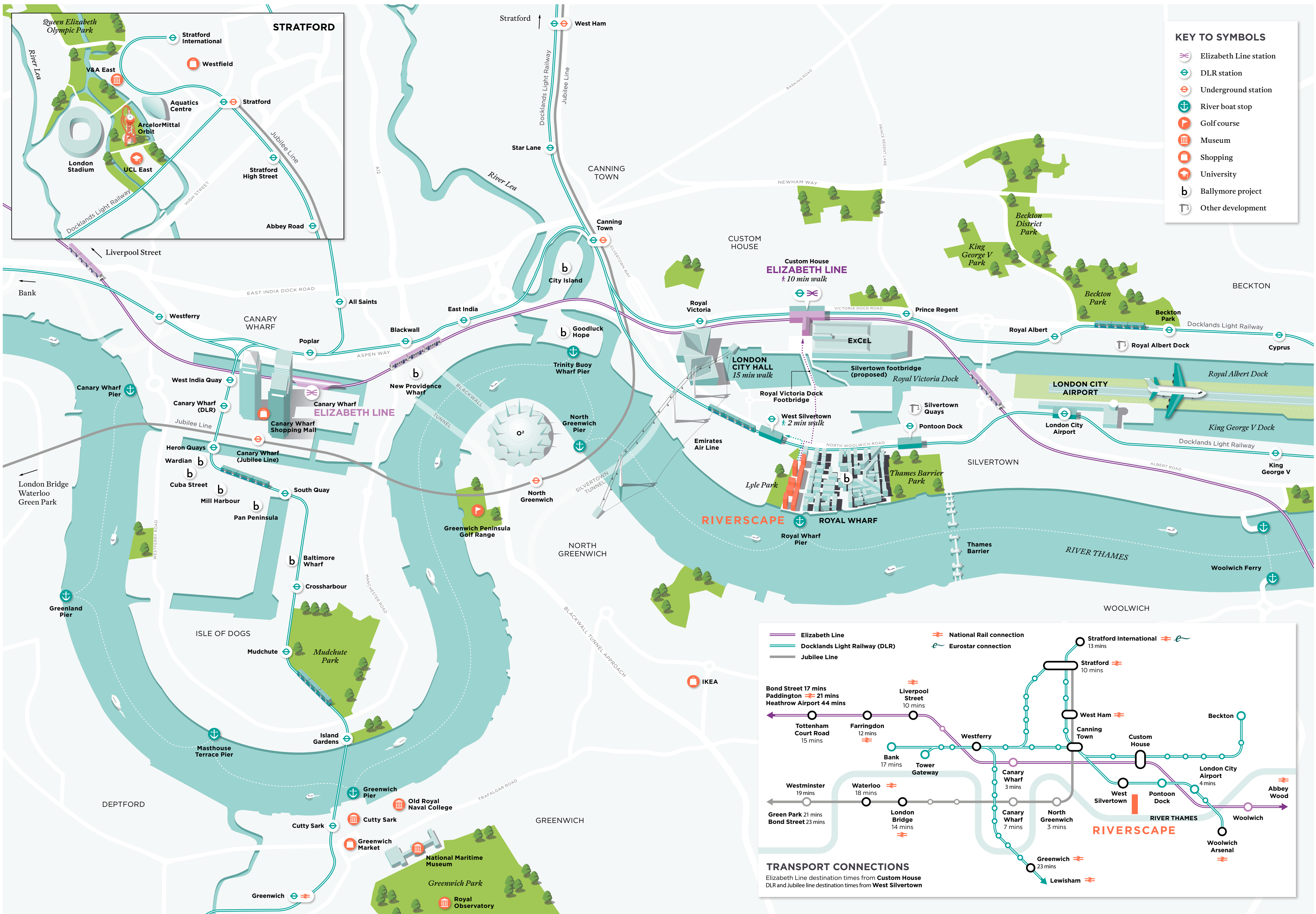
皇家码头旨在打造了一个以家庭为中心的温馨社区，这里拥有Nest幼儿园和优秀的皇家码头小学为孩子们提供了一个高品质的学习环境，而且社区的每个角落都确保是一个安全、舒适而且可以鼓励并激发孩子的兴趣的成长环境。从The Clubhouse会所的游泳课，到Community Dock社区中心的艺术和手工、戏剧和芭蕾舞课程应有尽有。假期也会举办很多活动，包括各类课程及活动，在夏季还会举办每年一度的皇家码头夏季庆典。游乐场、户外空间和Lyle公园网球场对孩子和成人来说都是非常棒的娱乐与娱乐的场所。



Near & Far 宜近宜远

这里的公路、铁路或水路交通都十分便捷。步行10分钟便可抵达伊丽莎白线（Crossrail火车站），去伦敦市中心不到20分钟。在公寓楼一侧的岸边有皇家渡船码头，搭乘泰晤士快船的Uber船可迅速抵达金融城，距离West Silvertown轻轨（DLR）步行仅2分钟路程，Riverscape项目拥有四通八达的便利交通网络。







THE ROYAL DOCKS

皇家码头

Riverscape位于曾经是世界上最大并且最繁忙的港口——皇家码头的中心，是唯一一座临河与园林环绕兼得的住宅开发项目，步行即可到达以伦敦市政厅为中心的新商业区和伊丽莎白线的海关大楼车站。**ExCel**、伦敦城市机场、伦敦大学和千禧磨坊都位于这个充满活力的地区，预计未来**20**年的投资将超过**80**亿英镑，构成皇家码头企业特区的**1,200**英亩的土地和约**12**英里的水面正在重新成为一个具有全球意义的商业和文化中心。

Around Royal Docks 皇家码头周边

地理位置优越，可以体验东伦敦的所有精华。在20分钟内就可以到达北格林威治——这里非常适合周末探险和体验世界上最激动人心的娱乐活动。比邻斯特拉特福德（Stratford）——东伦敦的一个繁荣地区，拥有伊丽莎白女王奥林匹克公园，一些主要大学，可观看英超足球比赛，国家铁路横跨这里，著名的Westfield购物中心和各类市场、商店、餐馆及酒吧。金丝雀码头——是世界上著名的金融、贸易、媒体和科技中心，让人们感受到世界名品与高街众多品牌的购物体验，餐饮和娱乐场所一应俱全，也是最新伊丽莎白铁路线上的一个站点。





SHAPE & FORM

房形与规格



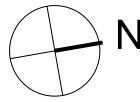
THE FORSHAW

LEVEL

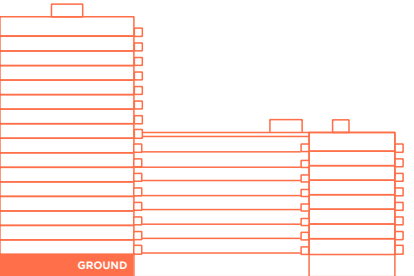
GF

LEGEND

- C Cupboard
- W Wardrobe
- F Fridge / Freezer
- L Laundry
- U Utility
- B Balcony
- T Terrace

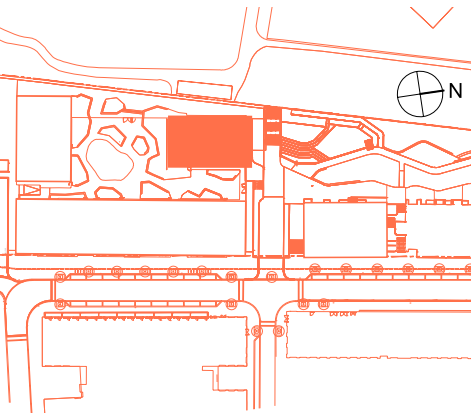


POSITION



WEST ELEVATION

LOCATION



Disclaimer
This brochure and the information contained in it does not form part of any contract, and while reasonable effort has been made to ensure accuracy, this cannot be guaranteed and no representation or warranty is made in that regard. Apartment designs and layouts are indicative only and may change. The specification of the apartments is the anticipated specification as at the date this brochure was prepared, but may be subject to change in accordance with permitted variances under the apartment sale contracts. Dimensions shown in any text or plan are approximate sizes only and actual sizes may be different once constructed (although it is not anticipated that any apartments will be reduced by more than 5% in size). Computer generated images and photos are indicative only. All sales remain subject to contract. All information regarding prospective commercial or retail tenants represents current intention only, and the final identity of the tenants may change. Furniture shown in Computer Generated images and photos is not included in sales. Riverscape is a marketing name only and will not necessarily form part of the approved postal address. Neither the agents nor any person in their employ has any authority to make or give any representation warranty or guarantee (whether written or oral) in respect of or in relation to the development (or any parts thereof).
© 2023 Riverscape

E002

3 Bedrooms

Internal Area
98.5 sq m / 1060 sq ft

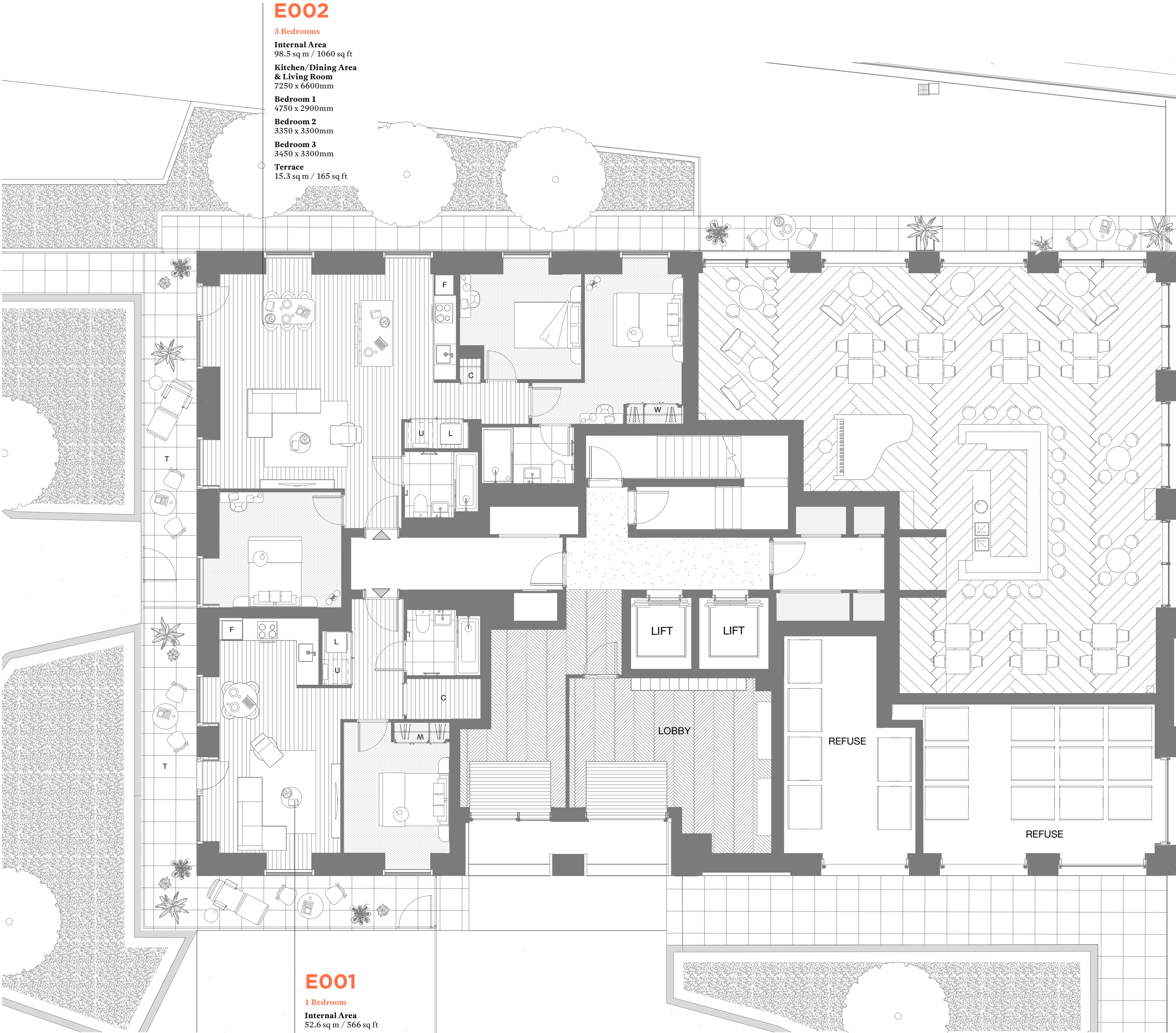
**Kitchen/Dining Area
& Living Room**
7250 x 6600mm

Bedroom 1
4750 x 2900mm

Bedroom 2
3350 x 3300mm

Bedroom 3
3450 x 3300mm

Terrace
15.3 sq m / 165 sq ft



E001

1 Bedroom

Internal Area
52.6 sq m / 566 sq ft

**Kitchen/Dining Area
& Living Room**
7200 x 3900mm

Bedroom
4200 x 3000mm

Terrace
23.9 sq m / 257 sq ft

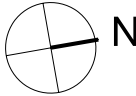
THE FORSHAW

LEVEL

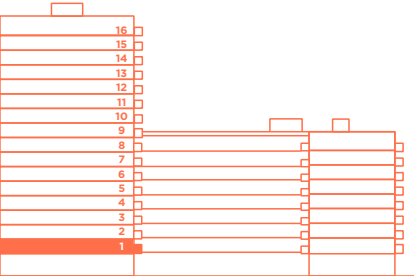
1

LEGEND

- C Cupboard
- W Wardrobe
- F Fridge/Freezer
- L Laundry
- U Utility
- B Balcony
- T Terrace

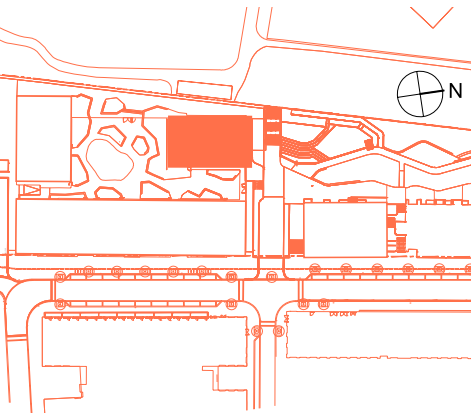


POSITION



WEST ELEVATION

LOCATION



Disclaimer
This brochure and the information contained in it does not form part of any contract, and while reasonable effort has been made to ensure accuracy, this cannot be guaranteed and no representation or warranty is made in that regard. Apartment designs and layouts are indicative only and may change. The specification of the apartments is the anticipated specification as at the date this brochure was prepared, but may be subject to change in accordance with permitted variances under the apartment sale contracts. Dimensions shown in any text or plan are approximate sizes only and actual sizes may be different once constructed (although it is not anticipated that any apartments will be reduced by more than 5% in size). Computer generated images and photos are indicative only. All sales remain subject to contract. All information regarding prospective commercial or retail tenants represents current intention only, and the final identity of the tenants may change. Furniture shown in Computer Generated images and photos is not included in sales. Riverscape is a marketing name only and will not necessarily form part of the approved postal address. Neither the agents nor any person in their employ has any authority to make or give any representation warranty or guarantee (whether written or oral) in respect of or in relation to the development (or any parts thereof).
© 2023 Riverscape

E103

3 Bedrooms
Internal Area
96.4 sq m / 1038 sq ft
Kitchen/Dining Area & Living Room
6850 x 6650mm
Bedroom 1
4350 x 2950mm
Bedroom 2
3500 x 3350mm
Bedroom 3
3340 x 3050mm
Balcony
9.5 sq m /102 sq ft

E104

3 Bedrooms
Internal Area
96.4 sq m / 1038 sq ft
Kitchen/Dining Area & Living Room
6850 x 6650mm
Bedroom 1
4350 x 2950mm
Bedroom 2
3500 x 3350mm
Bedroom 3
3340 x 3050mm
Balcony
9.5 sq m /102 sq ft



E102

1 Bedroom
Internal Area
51.9 sq m / 559 sq ft
Kitchen/Dining Area & Living Room
6790 x 3970mm
Bedroom
3775 x 3050mm
Balcony
9.5 sq m / 102 sq ft

E101

2 Bedrooms
Internal Area
75.9 sq m / 817 sq ft
Kitchen/Dining Area & Living Room
6745 x 4330mm
Bedroom 1
4780 x 3500mm
Bedroom 2
3650 x 3210mm
Balcony
9.5 sq m /102 sq ft

E105

1 Bedroom
Internal Area
51.7 sq m / 556 sq ft
Kitchen/Dining Area & Living Room
7260 x 3505mm
Bedroom
4250 x 3050mm
Balcony
9.5 sq m /102 sq ft

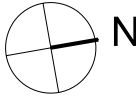
THE FORSHAW

LEVEL

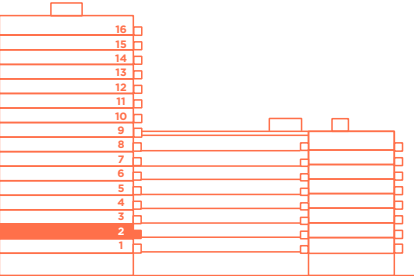
2

LEGEND

- C Cupboard
- W Wardrobe
- F Fridge/Freezer
- L Laundry
- U Utility
- B Balcony
- T Terrace

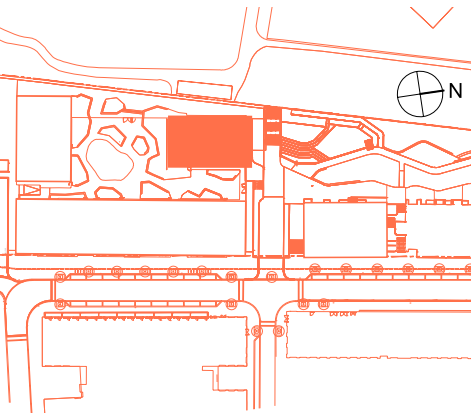


POSITION



WEST ELEVATION

LOCATION



Disclaimer
This brochure and the information contained in it does not form part of any contract, and while reasonable effort has been made to ensure accuracy, this cannot be guaranteed and no representation or warranty is made in that regard. Apartment designs and layouts are indicative only and may change. The specification of the apartments is the anticipated specification as at the date this brochure was prepared, but may be subject to change in accordance with permitted variances under the apartment sale contracts. Dimensions shown in any text or plan are approximate sizes only and actual sizes may be different once constructed (although it is not anticipated that any apartments will be reduced by more than 5% in size). Computer generated images and photos are indicative only. All sales remain subject to contract. All information regarding prospective commercial or retail tenants represents current intention only, and the final identity of the tenants may change. Furniture shown in Computer Generated images and photos is not included in sales. Riverscape is a marketing name only and will not necessarily form part of the approved postal address. Neither the agents nor any person in their employ has any authority to make or give any representation warranty or guarantee (whether written or oral) in respect of or in relation to the development (or any parts thereof).
© 2023 Riverscape

E203

3 Bedrooms

- Internal Area**
96.4 sq m / 1038 sq ft
- Kitchen/Dining Area & Living Room**
6850 x 6650mm
- Bedroom 1**
4350 x 2950mm
- Bedroom 2**
3500 x 3350mm
- Bedroom 3**
3340 x 3050mm
- Balcony**
9.5 sq m /102 sq ft

E204

3 Bedrooms

- Internal Area**
96.4 sq m / 1038 sq ft
- Kitchen/Dining Area & Living Room**
6850 x 6650mm
- Bedroom 1**
4350 x 2950mm
- Bedroom 2**
3500 x 3350mm
- Bedroom 3**
3340 x 3050mm
- Balcony**
9.5 sq m /102 sq ft



E202

1 Bedroom

- Internal Area**
51.9 sq m / 559 sq ft
- Kitchen/Dining Area & Living Room**
6790 x 3970mm
- Bedroom**
3775 x 3050mm
- Balcony**
9.5 sq m / 102 sq ft

E201

2 Bedrooms

- Internal Area**
75.9 sq m / 817 sq ft
- Kitchen/Dining Area & Living Room**
6745 x 4330mm
- Bedroom 1**
4780 x 3500mm
- Bedroom 2**
3650 x 3210mm
- Balcony**
9.5 sq m /102 sq ft

E205

1 Bedroom

- Internal Area**
51.7 sq m / 556 sq ft
- Kitchen/Dining Area & Living Room**
7260 x 3505mm
- Bedroom**
4250 x 3050mm
- Balcony**
9.5 sq m /102 sq ft

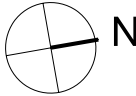
THE FORSHAW

LEVEL

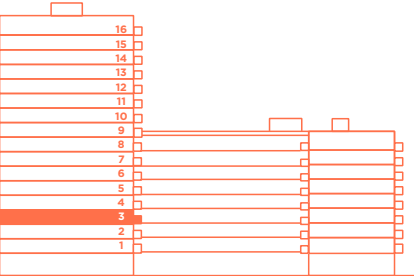
3

LEGEND

- C Cupboard
- W Wardrobe
- F Fridge/Freezer
- L Laundry
- U Utility
- B Balcony
- T Terrace

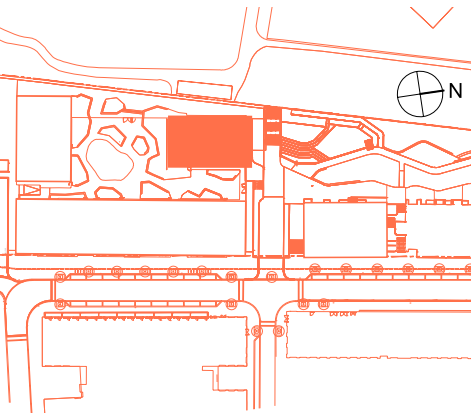


POSITION



WEST ELEVATION

LOCATION



Disclaimer
This brochure and the information contained in it does not form part of any contract, and while reasonable effort has been made to ensure accuracy, this cannot be guaranteed and no representation or warranty is made in that regard. Apartment designs and layouts are indicative only and may change. The specification of the apartments is the anticipated specification as at the date this brochure was prepared, but may be subject to change in accordance with permitted variances under the apartment sale contracts. Dimensions shown in any text or plan are approximate sizes only and actual sizes may be different once constructed (although it is not anticipated that any apartments will be reduced by more than 5% in size). Computer generated images and photos are indicative only. All sales remain subject to contract. All information regarding prospective commercial or retail tenants represents current intention only, and the final identity of the tenants may change. Furniture shown in Computer Generated images and photos is not included in sales. Riverscape is a marketing name only and will not necessarily form part of the approved postal address. Neither the agents nor any person in their employ has any authority to make or give any representation warranty or guarantee (whether written or oral) in respect of or in relation to the development (or any parts thereof).
© 2023 Riverscape

E303

3 Bedrooms

Internal Area
96.4 sq m / 1038 sq ft
Kitchen/Dining Area & Living Room
6850 x 6650mm
Bedroom 1
4350 x 2950mm
Bedroom 2
3500 x 3350mm
Bedroom 3
3340 x 3050mm
Balcony
9.5 sq m /102 sq ft

E304

3 Bedrooms

Internal Area
96.4 sq m / 1038 sq ft
Kitchen/Dining Area & Living Room
6850 x 6650mm
Bedroom 1
4350 x 2950mm
Bedroom 2
3500 x 3350mm
Bedroom 3
3340 x 3050mm
Balcony
9.5 sq m /102 sq ft



E302

1 Bedroom

Internal Area
51.9 sq m / 559 sq ft
Kitchen/Dining Area & Living Room
6790 x 3970mm
Bedroom
3775 x 3050mm
Balcony
9.5 sq m / 102 sq ft

E301

2 Bedrooms

Internal Area
75.9 sq m / 817 sq ft
Kitchen/Dining Area & Living Room
6745 x 4330mm
Bedroom 1
4780 x 3500mm
Bedroom 2
3650 x 3210mm
Balcony
9.5 sq m /102 sq ft

E305

1 Bedroom

Internal Area
51.7 sq m / 556 sq ft
Kitchen/Dining Area & Living Room
7260 x 3505mm
Bedroom
4250 x 3050mm
Balcony
9.5 sq m /102 sq ft

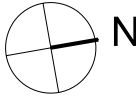
THE FORSHAW

LEVEL

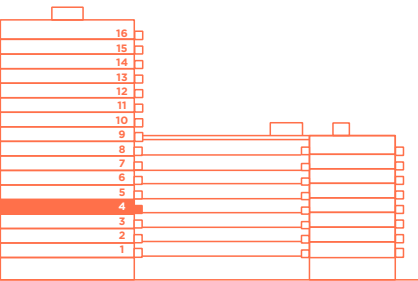
4

LEGEND

- C Cupboard
- W Wardrobe
- F Fridge/Freezer
- L Laundry
- U Utility
- B Balcony
- T Terrace

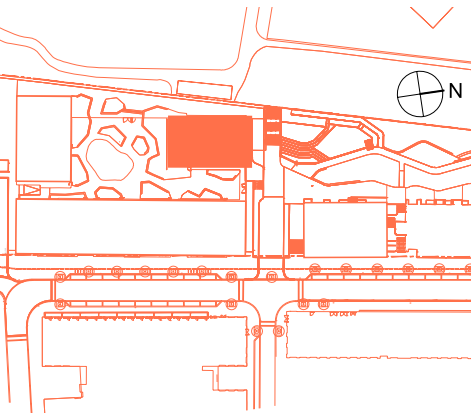


POSITION



WEST ELEVATION

LOCATION



Disclaimer
This brochure and the information contained in it does not form part of any contract, and while reasonable effort has been made to ensure accuracy, this cannot be guaranteed and no representation or warranty is made in that regard. Apartment designs and layouts are indicative only and may change. The specification of the apartments is the anticipated specification as at the date this brochure was prepared, but may be subject to change in accordance with permitted variances under the apartment sale contracts. Dimensions shown in any text or plan are approximate sizes only and actual sizes may be different once constructed (although it is not anticipated that any apartments will be reduced by more than 5% in size). Computer generated images and photos are indicative only. All sales remain subject to contract. All information regarding prospective commercial or retail tenants represents current intention only, and the final identity of the tenants may change. Furniture shown in Computer Generated images and photos is not included in sales. Riverscape is a marketing name only and will not necessarily form part of the approved postal address. Neither the agents nor any person in their employ has any authority to make or give any representation warranty or guarantee (whether written or oral) in respect of or in relation to the development (or any parts thereof).
© 2023 Riverscape

E403

- 3 Bedrooms
- Internal Area
96.4 sq m / 1038 sq ft
- Kitchen/Dining Area
& Living Room
6850 x 6650mm
- Bedroom 1
4350 x 2950mm
- Bedroom 2
3500 x 3350mm
- Bedroom 3
3340 x 3050mm
- Balcony
9.5 sq m /102 sq ft

E404

- 3 Bedrooms
- Internal Area
96.4 sq m / 1038 sq ft
- Kitchen/Dining Area
& Living Room
6850 x 6650mm
- Bedroom 1
4350 x 2950mm
- Bedroom 2
3500 x 3350mm
- Bedroom 3
3340 x 3050mm
- Balcony
9.5 sq m /102 sq ft



E402

- 1 Bedroom
- Internal Area
51.9 sq m / 559 sq ft
- Kitchen/Dining Area
& Living Room
6790 x 3970mm
- Bedroom
3775 x 3050mm
- Balcony
9.5 sq m / 102 sq ft

E401

- 2 Bedrooms
- Internal Area
75.9 sq m / 817 sq ft
- Kitchen/Dining Area
& Living Room
6745 x 4330mm
- Bedroom 1
4780 x 3500mm
- Bedroom 2
3650 x 3210mm
- Balcony
9.5 sq m /102 sq ft

E405

- 1 Bedroom
- Internal Area
51.7 sq m / 556 sq ft
- Kitchen/Dining Area
& Living Room
7260 x 3505mm
- Bedroom
4250 x 3050mm
- Balcony
9.5 sq m /102 sq ft

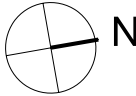
THE FORSHAW

LEVEL

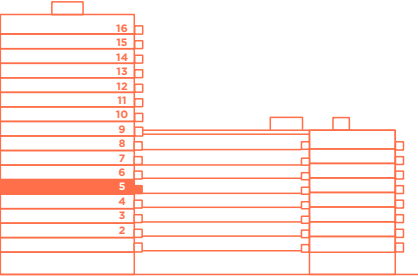
5

LEGEND

- C Cupboard
- W Wardrobe
- F Fridge/Freezer
- L Laundry
- U Utility
- B Balcony
- T Terrace

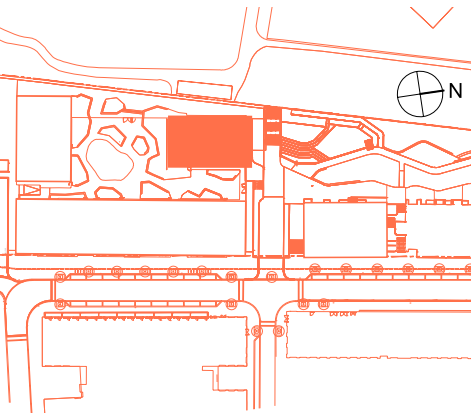


POSITION



WEST ELEVATION

LOCATION



Disclaimer
This brochure and the information contained in it does not form part of any contract, and while reasonable effort has been made to ensure accuracy, this cannot be guaranteed and no representation or warranty is made in that regard. Apartment designs and layouts are indicative only and may change. The specification of the apartments is the anticipated specification as at the date this brochure was prepared, but may be subject to change in accordance with permitted variances under the apartment sale contracts. Dimensions shown in any text or plan are approximate sizes only and actual sizes may be different once constructed (although it is not anticipated that any apartments will be reduced by more than 5% in size). Computer generated images and photos are indicative only. All sales remain subject to contract. All information regarding prospective commercial or retail tenants represents current intention only, and the final identity of the tenants may change. Furniture shown in Computer Generated images and photos is not included in sales. Riverscape is a marketing name only and will not necessarily form part of the approved postal address. Neither the agents nor any person in their employ has any authority to make or give any representation warranty or guarantee (whether written or oral) in respect of or in relation to the development (or any parts thereof).
© 2023 Riverscape

E503

- 3 Bedrooms
- Internal Area
96.4 sq m / 1038 sq ft
- Kitchen/Dining Area & Living Room
6850 x 6650mm
- Bedroom 1
4350 x 2950mm
- Bedroom 2
3500 x 3350mm
- Bedroom 3
3340 x 3050mm
- Balcony
9.5 sq m /102 sq ft

E504

- 3 Bedrooms
- Internal Area
96.4 sq m / 1038 sq ft
- Kitchen/Dining Area & Living Room
6850 x 6650mm
- Bedroom 1
4350 x 2950mm
- Bedroom 2
3500 x 3350mm
- Bedroom 3
3340 x 3050mm
- Balcony
9.5 sq m /102 sq ft



E502

- 1 Bedroom
- Internal Area
51.9 sq m / 559 sq ft
- Kitchen/Dining Area & Living Room
6790 x 3970mm
- Bedroom
3775 x 3050mm
- Balcony
9.5 sq m / 102 sq ft

E501

- 2 Bedrooms
- Internal Area
75.9 sq m / 817 sq ft
- Kitchen/Dining Area & Living Room
6745 x 4330mm
- Bedroom 1
4780 x 3500mm
- Bedroom 2
3650 x 3210mm
- Balcony
9.5 sq m /102 sq ft

E505

- 1 Bedroom
- Internal Area
51.7 sq m / 556 sq ft
- Kitchen/Dining Area & Living Room
7260 x 3505mm
- Bedroom
4250 x 3050mm
- Balcony
9.5 sq m /102 sq ft

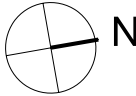
THE FORSHAW

LEVEL

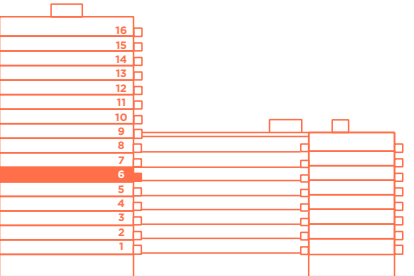
6

LEGEND

- C Cupboard
- W Wardrobe
- F Fridge/Freezer
- L Laundry
- U Utility
- B Balcony
- T Terrace

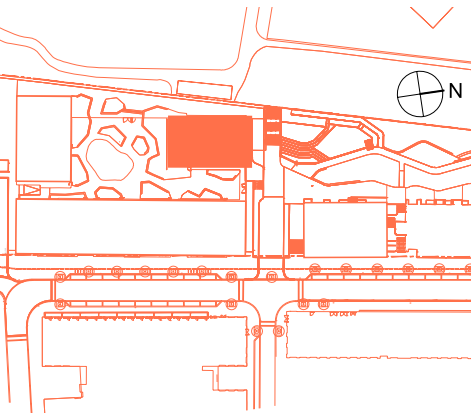


POSITION



WEST ELEVATION

LOCATION



Disclaimer
This brochure and the information contained in it does not form part of any contract, and while reasonable effort has been made to ensure accuracy, this cannot be guaranteed and no representation or warranty is made in that regard. Apartment designs and layouts are indicative only and may change. The specification of the apartments is the anticipated specification as at the date this brochure was prepared, but may be subject to change in accordance with permitted variances under the apartment sale contracts. Dimensions shown in any text or plan are approximate sizes only and actual sizes may be different once constructed (although it is not anticipated that any apartments will be reduced by more than 5% in size). Computer generated images and photos are indicative only. All sales remain subject to contract. All information regarding prospective commercial or retail tenants represents current intention only, and the final identity of the tenants may change. Furniture shown in Computer Generated images and photos is not included in sales. Riverscape is a marketing name only and will not necessarily form part of the approved postal address. Neither the agents nor any person in their employ has any authority to make or give any representation warranty or guarantee (whether written or oral) in respect of or in relation to the development (or any parts thereof).
© 2023 Riverscape

E603

- 3 Bedrooms
- Internal Area
96.4 sq m / 1038 sq ft
- Kitchen/Dining Area & Living Room
6850 x 6650mm
- Bedroom 1
4350 x 2950mm
- Bedroom 2
3500 x 3350mm
- Bedroom 3
3340 x 3050mm
- Balcony
9.5 sq m /102 sq ft

E604

- 3 Bedrooms
- Internal Area
96.4 sq m / 1038 sq ft
- Kitchen/Dining Area & Living Room
6850 x 6650mm
- Bedroom 1
4350 x 2950mm
- Bedroom 2
3500 x 3350mm
- Bedroom 3
3340 x 3050mm
- Balcony
9.5 sq m /102 sq ft



E602

- 1 Bedroom
- Internal Area
51.9 sq m / 559 sq ft
- Kitchen/Dining Area & Living Room
6790 x 3970mm
- Bedroom
3775 x 3050mm
- Balcony
9.5 sq m / 102 sq ft

E601

- 2 Bedrooms
- Internal Area
75.9 sq m / 817 sq ft
- Kitchen/Dining Area & Living Room
6745 x 4330mm
- Bedroom 1
4780 x 3500mm
- Bedroom 2
3650 x 3210mm
- Balcony
9.5 sq m /102 sq ft

E605

- 1 Bedroom
- Internal Area
51.7 sq m / 556 sq ft
- Kitchen/Dining Area & Living Room
7260 x 3505mm
- Bedroom
4250 x 3050mm
- Balcony
9.5 sq m /102 sq ft

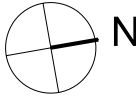
THE FORSHAW

LEVEL

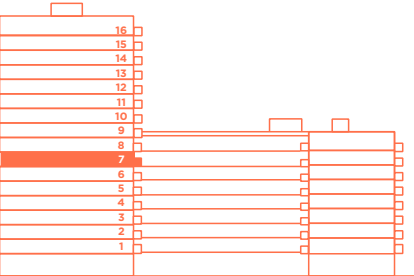
7

LEGEND

- C Cupboard
- W Wardrobe
- F Fridge/Freezer
- L Laundry
- U Utility
- B Balcony
- T Terrace

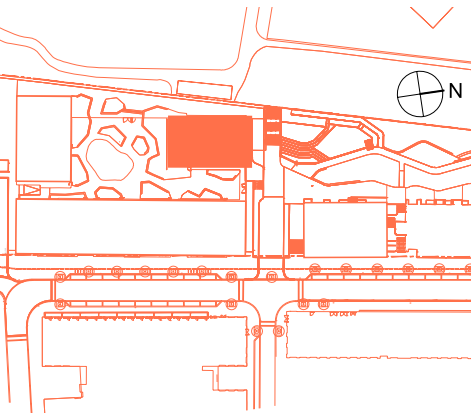


POSITION



WEST ELEVATION

LOCATION



Disclaimer
This brochure and the information contained in it does not form part of any contract, and while reasonable effort has been made to ensure accuracy, this cannot be guaranteed and no representation or warranty is made in that regard. Apartment designs and layouts are indicative only and may change. The specification of the apartments is the anticipated specification as at the date this brochure was prepared, but may be subject to change in accordance with permitted variances under the apartment sale contracts. Dimensions shown in any text or plan are approximate sizes only and actual sizes may be different once constructed (although it is not anticipated that any apartments will be reduced by more than 5% in size). Computer generated images and photos are indicative only. All sales remain subject to contract. All information regarding prospective commercial or retail tenants represents current intention only, and the final identity of the tenants may change. Furniture shown in Computer Generated images and photos is not included in sales. Riverscape is a marketing name only and will not necessarily form part of the approved postal address. Neither the agents nor any person in their employ has any authority to make or give any representation warranty or guarantee (whether written or oral) in respect of or in relation to the development (or any parts thereof).
© 2023 Riverscape

E703

3 Bedrooms

Internal Area
96.4 sq m / 1038 sq ft
Kitchen/Dining Area & Living Room
6850 x 6650mm
Bedroom 1
4350 x 2950mm
Bedroom 2
3500 x 3350mm
Bedroom 3
3340 x 3050mm
Balcony
9.5 sq m /102 sq ft

E704

3 Bedrooms

Internal Area
96.4 sq m / 1038 sq ft
Kitchen/Dining Area & Living Room
6850 x 6650mm
Bedroom 1
4350 x 2950mm
Bedroom 2
3500 x 3350mm
Bedroom 3
3340 x 3050mm
Balcony
9.5 sq m /102 sq ft



E702

1 Bedroom

Internal Area
51.9 sq m / 559 sq ft
Kitchen/Dining Area & Living Room
6790 x 3970mm
Bedroom
3775 x 3050mm
Balcony
9.5 sq m / 102 sq ft

E701

2 Bedrooms

Internal Area
75.9 sq m / 817 sq ft
Kitchen/Dining Area & Living Room
6745 x 4330mm
Bedroom 1
4780 x 3500mm
Bedroom 2
3650 x 3210mm
Balcony
9.5 sq m /102 sq ft

E705

1 Bedroom

Internal Area
51.7 sq m / 556 sq ft
Kitchen/Dining Area & Living Room
7260 x 3505mm
Bedroom
4250 x 3050mm
Balcony
9.5 sq m /102 sq ft

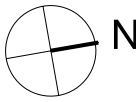
THE FORSHAW

LEVEL

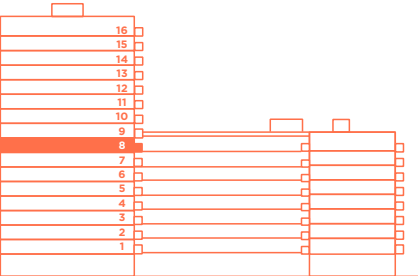
8

LEGEND

- C Cupboard
- W Wardrobe
- F Fridge/Freezer
- L Laundry
- U Utility
- B Balcony
- T Terrace

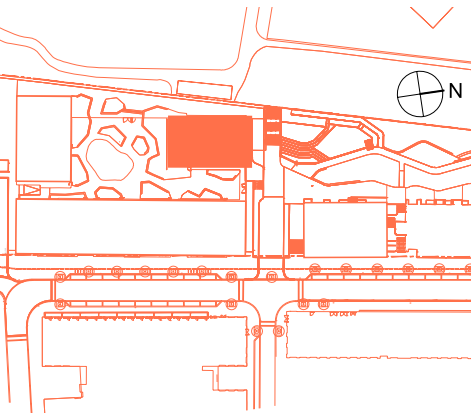


POSITION



WEST ELEVATION

LOCATION



Disclaimer
This brochure and the information contained in it does not form part of any contract, and while reasonable effort has been made to ensure accuracy, this cannot be guaranteed and no representation or warranty is made in that regard. Apartment designs and layouts are indicative only and may change. The specification of the apartments is the anticipated specification as at the date this brochure was prepared, but may be subject to change in accordance with permitted variances under the apartment sale contracts. Dimensions shown in any text or plan are approximate sizes only and actual sizes may be different once constructed (although it is not anticipated that any apartments will be reduced by more than 5% in size). Computer generated images and photos are indicative only. All sales remain subject to contract. All information regarding prospective commercial or retail tenants represents current intention only, and the final identity of the tenants may change. Furniture shown in Computer Generated images and photos is not included in sales. Riverscape is a marketing name only and will not necessarily form part of the approved postal address. Neither the agents nor any person in their employ has any authority to make or give any representation warranty or guarantee (whether written or oral) in respect of or in relation to the development (or any parts thereof).
© 2023 Riverscape

E803

3 Bedrooms

Internal Area
96.4 sq m / 1038 sq ft
Kitchen/Dining Area & Living Room
6850 x 6650mm
Bedroom 1
4350 x 2950mm
Bedroom 2
3500 x 3350mm
Bedroom 3
3340 x 3050mm
Balcony
9.5 sq m /102 sq ft

E804

3 Bedrooms

Internal Area
96.4 sq m / 1038 sq ft
Kitchen/Dining Area & Living Room
6850 x 6650mm
Bedroom 1
4350 x 2950mm
Bedroom 2
3500 x 3350mm
Bedroom 3
3340 x 3050mm
Balcony
9.5 sq m /102 sq ft



E802

1 Bedroom

Internal Area
51.9 sq m / 559 sq ft
Kitchen/Dining Area & Living Room
6790 x 3970mm
Bedroom
3775 x 3050mm
Balcony
9.5 sq m / 102 sq ft

E801

2 Bedrooms

Internal Area
75.9 sq m / 817 sq ft
Kitchen/Dining Area & Living Room
6745 x 4330mm
Bedroom 1
4780 x 3500mm
Bedroom 2
3650 x 3210mm
Balcony
9.5 sq m /102 sq ft

E805

1 Bedroom

Internal Area
51.7 sq m / 556 sq ft
Kitchen/Dining Area & Living Room
7260 x 3505mm
Bedroom
4250 x 3050mm
Balcony
9.5 sq m /102 sq ft

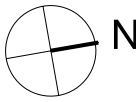
THE FORSHAW

LEVEL

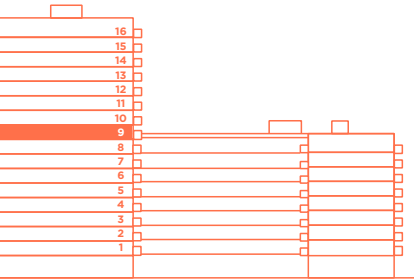
9

LEGEND

- C Cupboard
- W Wardrobe
- F Fridge/Freezer
- L Laundry
- U Utility
- B Balcony
- T Terrace

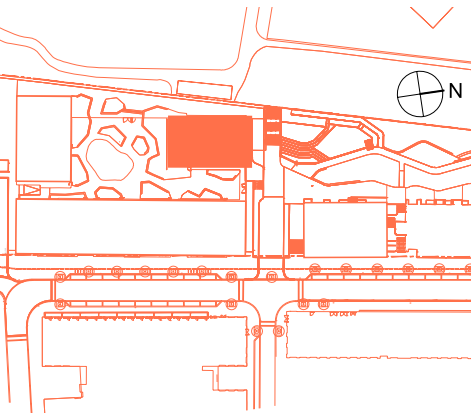


POSITION



WEST ELEVATION

LOCATION



Disclaimer
This brochure and the information contained in it does not form part of any contract, and while reasonable effort has been made to ensure accuracy, this cannot be guaranteed and no representation or warranty is made in that regard. Apartment designs and layouts are indicative only and may change. The specification of the apartments is the anticipated specification as at the date this brochure was prepared, but may be subject to change in accordance with permitted variances under the apartment sale contracts. Dimensions shown in any text or plan are approximate sizes only and actual sizes may be different once constructed (although it is not anticipated that any apartments will be reduced by more than 5% in size). Computer generated images and photos are indicative only. All sales remain subject to contract. All information regarding prospective commercial or retail tenants represents current intention only, and the final identity of the tenants may change. Furniture shown in Computer Generated images and photos is not included in sales. Riverscape is a marketing name only and will not necessarily form part of the approved postal address. Neither the agents nor any person in their employ has any authority to make or give any representation warranty or guarantee (whether written or oral) in respect of or in relation to the development (or any parts thereof).
© 2023 Riverscape

E903

- 3 Bedrooms**
- Internal Area**
96.4 sq m / 1038 sq ft
- Kitchen/Dining Area & Living Room**
6850 x 6650mm
- Bedroom 1**
4350 x 2950mm
- Bedroom 2**
3500 x 3350mm
- Bedroom 3**
3340 x 3050mm
- Balcony**
9.5 sq m /102 sq ft

E904

- 3 Bedrooms**
- Internal Area**
96.4 sq m / 1038 sq ft
- Kitchen/Dining Area & Living Room**
6850 x 6650mm
- Bedroom 1**
4350 x 2950mm
- Bedroom 2**
3500 x 3350mm
- Bedroom 3**
3340 x 3050mm
- Balcony**
9.5 sq m /102 sq ft



E902

- 1 Bedroom**
- Internal Area**
51.9 sq m / 559 sq ft
- Kitchen/Dining Area & Living Room**
6790 x 3970mm
- Bedroom**
3775 x 3050mm
- Balcony**
9.5 sq m / 102 sq ft

E901

- 2 Bedrooms**
- Internal Area**
75.9 sq m / 817 sq ft
- Kitchen/Dining Area & Living Room**
6745 x 4330mm
- Bedroom 1**
4780 x 3500mm
- Bedroom 2**
3650 x 3210mm
- Balcony**
9.5 sq m /102 sq ft

E905

- 1 Bedroom**
- Internal Area**
51.7 sq m / 556 sq ft
- Kitchen/Dining Area & Living Room**
7260 x 3505mm
- Bedroom**
4250 x 3050mm
- Balcony**
9.5 sq m /102 sq ft

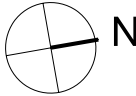
THE FORSHAW

LEVEL

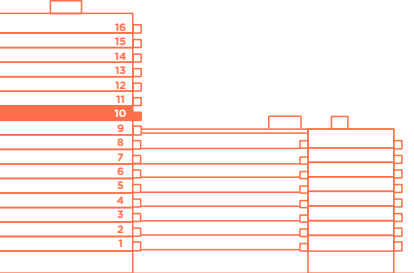
10

LEGEND

- C Cupboard
- W Wardrobe
- F Fridge/Freezer
- L Laundry
- U Utility
- B Balcony
- T Terrace

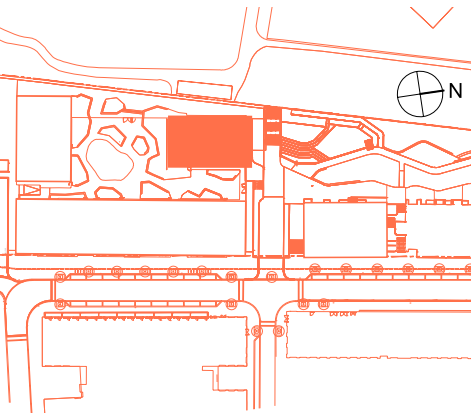


POSITION



WEST ELEVATION

LOCATION



Disclaimer
This brochure and the information contained in it does not form part of any contract, and while reasonable effort has been made to ensure accuracy, this cannot be guaranteed and no representation or warranty is made in that regard. Apartment designs and layouts are indicative only and may change. The specification of the apartments is the anticipated specification as at the date this brochure was prepared, but may be subject to change in accordance with permitted variances under the apartment sale contracts. Dimensions shown in any text or plan are approximate sizes only and actual sizes may be different once constructed (although it is not anticipated that any apartments will be reduced by more than 5% in size). Computer generated images and photos are indicative only. All sales remain subject to contract. All information regarding prospective commercial or retail tenants represents current intention only, and the final identity of the tenants may change. Furniture shown in Computer Generated images and photos is not included in sales. Riverscape is a marketing name only and will not necessarily form part of the approved postal address. Neither the agents nor any person in their employ has any authority to make or give any representation warranty or guarantee (whether written or oral) in respect of or in relation to the development (or any parts thereof).
© 2023 Riverscape

E1003

3 Bedrooms
Internal Area
96.4 sq m / 1038 sq ft
Kitchen/Dining Area & Living Room
6850 x 6650mm
Bedroom 1
4350 x 2950mm
Bedroom 2
3500 x 3350mm
Bedroom 3
3340 x 3050mm
Balcony
9.5 sq m /102 sq ft

E1004

3 Bedrooms
Internal Area
96.4 sq m / 1038 sq ft
Kitchen/Dining Area & Living Room
6850 x 6650mm
Bedroom 1
4350 x 2950mm
Bedroom 2
3500 x 3350mm
Bedroom 3
3340 x 3050mm
Balcony
9.5 sq m /102 sq ft



E1002

1 Bedroom
Internal Area
51.9 sq m / 559 sq ft
Kitchen/Dining Area & Living Room
6790 x 3970mm
Bedroom
3775 x 3050mm
Balcony
9.5 sq m / 102 sq ft

E1001

2 Bedrooms
Internal Area
75.9 sq m / 817 sq ft
Kitchen/Dining Area & Living Room
6745 x 4330mm
Bedroom 1
4780 x 3500mm
Bedroom 2
3650 x 3210mm
Balcony
9.5 sq m /102 sq ft

E1005

1 Bedroom
Internal Area
51.7 sq m / 556 sq ft
Kitchen/Dining Area & Living Room
7260 x 3505mm
Bedroom
4250 x 3050mm
Balcony
9.5 sq m /102 sq ft

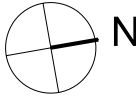
THE FORSHAW

LEVEL

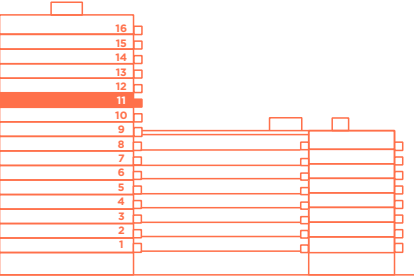
11

LEGEND

- C Cupboard
- W Wardrobe
- F Fridge/Freezer
- L Laundry
- U Utility
- B Balcony
- T Terrace

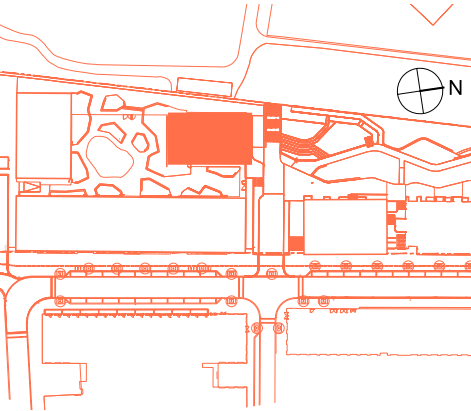


POSITION



WEST ELEVATION

LOCATION



Disclaimer
This brochure and the information contained in it does not form part of any contract, and while reasonable effort has been made to ensure accuracy, this cannot be guaranteed and no representation or warranty is made in that regard. Apartment designs and layouts are indicative only and may change. The specification of the apartments is the anticipated specification as at the date this brochure was prepared, but may be subject to change in accordance with permitted variances under the apartment sale contracts. Dimensions shown in any text or plan are approximate sizes only and actual sizes may be different once constructed (although it is not anticipated that any apartments will be reduced by more than 5% in size). Computer generated images and photos are indicative only. All sales remain subject to contract. All information regarding prospective commercial or retail tenants represents current intention only, and the final identity of the tenants may change. Furniture shown in Computer Generated images and photos is not included in sales. Riverscape is a marketing name only and will not necessarily form part of the approved postal address. Neither the agents nor any person in their employ has any authority to make or give any representation warranty or guarantee (whether written or oral) in respect of or in relation to the development (or any parts thereof).
© 2023 Riverscape

E1103

3 Bedrooms
Internal Area
96.4 sq m / 1038 sq ft
Kitchen/Dining Area & Living Room
6850 x 6650mm
Bedroom 1
4350 x 2950mm
Bedroom 2
3500 x 3350mm
Bedroom 3
3340 x 3050mm
Balcony
9.5 sq m /102 sq ft

E1104

3 Bedrooms
Internal Area
96.4 sq m / 1038 sq ft
Kitchen/Dining Area & Living Room
6850 x 6650mm
Bedroom 1
4350 x 2950mm
Bedroom 2
3500 x 3350mm
Bedroom 3
3340 x 3050mm
Balcony
9.5 sq m /102 sq ft



E1102

1 Bedroom
Internal Area
51.9 sq m / 559 sq ft
Kitchen/Dining Area & Living Room
6790 x 3970mm
Bedroom
3775 x 3050mm
Balcony
9.5 sq m / 102 sq ft

E1101

2 Bedrooms
Internal Area
75.9 sq m / 817 sq ft
Kitchen/Dining Area & Living Room
6745 x 4330mm
Bedroom 1
4780 x 3500mm
Bedroom 2
3650 x 3210mm
Balcony
9.5 sq m /102 sq ft

E1105

1 Bedroom
Internal Area
51.7 sq m / 556 sq ft
Kitchen/Dining Area & Living Room
7260 x 3505mm
Bedroom
4250 x 3050mm
Balcony
9.5 sq m /102 sq ft

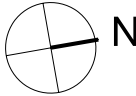
THE FORSHAW

LEVEL

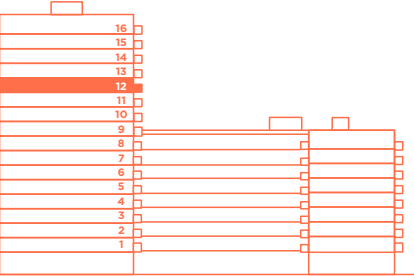
12

LEGEND

- C Cupboard
- W Wardrobe
- F Fridge/Freezer
- L Laundry
- U Utility
- B Balcony
- T Terrace

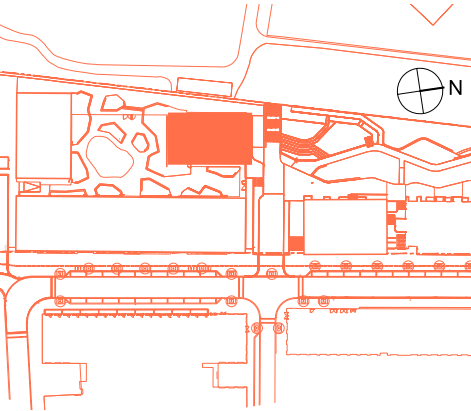


POSITION



WEST ELEVATION

LOCATION



Disclaimer
This brochure and the information contained in it does not form part of any contract, and while reasonable effort has been made to ensure accuracy, this cannot be guaranteed and no representation or warranty is made in that regard. Apartment designs and layouts are indicative only and may change. The specification of the apartments is the anticipated specification as at the date this brochure was prepared, but may be subject to change in accordance with permitted variances under the apartment sale contracts. Dimensions shown in any text or plan are approximate sizes only and actual sizes may be different once constructed (although it is not anticipated that any apartments will be reduced by more than 5% in size). Computer generated images and photos are indicative only. All sales remain subject to contract. All information regarding prospective commercial or retail tenants represents current intention only, and the final identity of the tenants may change. Furniture shown in Computer Generated images and photos is not included in sales. Riverscape is a marketing name only and will not necessarily form part of the approved postal address. Neither the agents nor any person in their employ has any authority to make or give any representation warranty or guarantee (whether written or oral) in respect of or in relation to the development (or any parts thereof).
© 2023 Riverscape

E1203

- 3 Bedrooms
- Internal Area
96.4 sq m / 1038 sq ft
- Kitchen/Dining Area & Living Room
6850 x 6650mm
- Bedroom 1
4350 x 2950mm
- Bedroom 2
3500 x 3350mm
- Bedroom 3
3340 x 3050mm
- Balcony
9.5 sq m /102 sq ft

E1204

- 3 Bedrooms
- Internal Area
96.4 sq m / 1038 sq ft
- Kitchen/Dining Area & Living Room
6850 x 6650mm
- Bedroom 1
4350 x 2950mm
- Bedroom 2
3500 x 3350mm
- Bedroom 3
3340 x 3050mm
- Balcony
9.5 sq m /102 sq ft



E1202

- 1 Bedroom
- Internal Area
51.9 sq m / 559 sq ft
- Kitchen/Dining Area & Living Room
6790 x 3970mm
- Bedroom
3775 x 3050mm
- Balcony
9.5 sq m / 102 sq ft

E1201

- 2 Bedrooms
- Internal Area
75.9 sq m / 817 sq ft
- Kitchen/Dining Area & Living Room
6745 x 4330mm
- Bedroom 1
4780 x 3500mm
- Bedroom 2
3650 x 3210mm
- Balcony
9.5 sq m /102 sq ft

E1205

- 1 Bedroom
- Internal Area
51.7 sq m / 556 sq ft
- Kitchen/Dining Area & Living Room
7260 x 3505mm
- Bedroom
4250 x 3050mm
- Balcony
9.5 sq m /102 sq ft

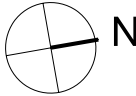
THE FORSHAW

LEVEL

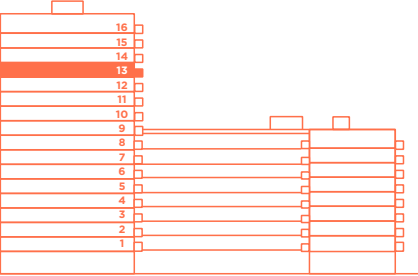
13

LEGEND

- C Cupboard
- W Wardrobe
- F Fridge/Freezer
- L Laundry
- U Utility
- B Balcony
- T Terrace

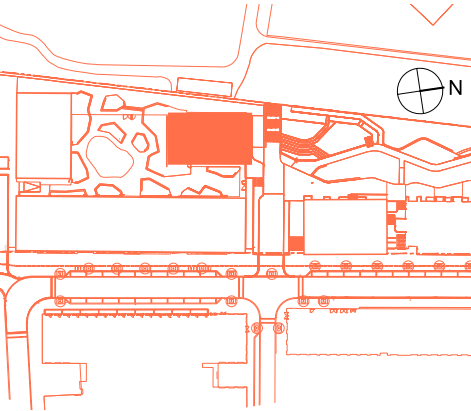


POSITION



WEST ELEVATION

LOCATION



Disclaimer
This brochure and the information contained in it does not form part of any contract, and while reasonable effort has been made to ensure accuracy, this cannot be guaranteed and no representation or warranty is made in that regard. Apartment designs and layouts are indicative only and may change. The specification of the apartments is the anticipated specification as at the date this brochure was prepared, but may be subject to change in accordance with permitted variances under the apartment sale contracts. Dimensions shown in any text or plan are approximate sizes only and actual sizes may be different once constructed (although it is not anticipated that any apartments will be reduced by more than 5% in size). Computer generated images and photos are indicative only. All sales remain subject to contract. All information regarding prospective commercial or retail tenants represents current intention only, and the final identity of the tenants may change. Furniture shown in Computer Generated images and photos is not included in sales. Riverscape is a marketing name only and will not necessarily form part of the approved postal address. Neither the agents nor any person in their employ has any authority to make or give any representation warranty or guarantee (whether written or oral) in respect of or in relation to the development (or any parts thereof).
© 2023 Riverscape

E1303

3 Bedrooms

- Internal Area**
96.4 sq m / 1038 sq ft
- Kitchen/Dining Area & Living Room**
6850 x 6650mm
- Bedroom 1**
4350 x 2950mm
- Bedroom 2**
3500 x 3350mm
- Bedroom 3**
3340 x 3050mm
- Balcony**
9.5 sq m /102 sq ft

E1304

3 Bedrooms

- Internal Area**
96.4 sq m / 1038 sq ft
- Kitchen/Dining Area & Living Room**
6850 x 6650mm
- Bedroom 1**
4350 x 2950mm
- Bedroom 2**
3500 x 3350mm
- Bedroom 3**
3340 x 3050mm
- Balcony**
9.5 sq m /102 sq ft



E1302

1 Bedroom

- Internal Area**
51.9 sq m / 559 sq ft
- Kitchen/Dining Area & Living Room**
6790 x 3970mm
- Bedroom**
3775 x 3050mm
- Balcony**
9.5 sq m / 102 sq ft

E1301

2 Bedrooms

- Internal Area**
75.9 sq m / 817 sq ft
- Kitchen/Dining Area & Living Room**
6745 x 4330mm
- Bedroom 1**
4780 x 3500mm
- Bedroom 2**
3650 x 3210mm
- Balcony**
9.5 sq m /102 sq ft

E1305

1 Bedroom

- Internal Area**
51.7 sq m / 556 sq ft
- Kitchen/Dining Area & Living Room**
7260 x 3505mm
- Bedroom**
4250 x 3050mm
- Balcony**
9.5 sq m /102 sq ft

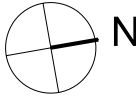
THE FORSHAW

LEVEL

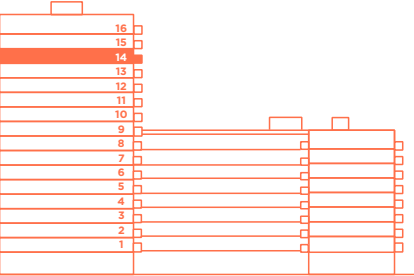
14

LEGEND

- C Cupboard
- W Wardrobe
- F Fridge/Freezer
- L Laundry
- U Utility
- B Balcony
- T Terrace

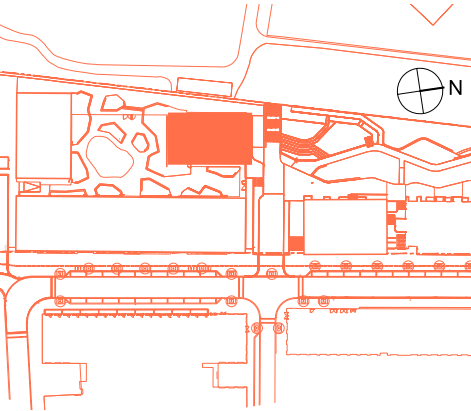


POSITION



WEST ELEVATION

LOCATION



Disclaimer
This brochure and the information contained in it does not form part of any contract, and while reasonable effort has been made to ensure accuracy, this cannot be guaranteed and no representation or warranty is made in that regard. Apartment designs and layouts are indicative only and may change. The specification of the apartments is the anticipated specification as at the date this brochure was prepared, but may be subject to change in accordance with permitted variances under the apartment sale contracts. Dimensions shown in any text or plan are approximate sizes only and actual sizes may be different once constructed (although it is not anticipated that any apartments will be reduced by more than 5% in size). Computer generated images and photos are indicative only. All sales remain subject to contract. All information regarding prospective commercial or retail tenants represents current intention only, and the final identity of the tenants may change. Furniture shown in Computer Generated images and photos is not included in sales. Riverscape is a marketing name only and will not necessarily form part of the approved postal address. Neither the agents nor any person in their employ has any authority to make or give any representation warranty or guarantee (whether written or oral) in respect of or in relation to the development (or any parts thereof).
© 2023 Riverscape

E1403

- 3 Bedrooms
- Internal Area
96.4 sq m / 1038 sq ft
- Kitchen/Dining Area
& Living Room
6850 x 6650mm
- Bedroom 1
4350 x 2950mm
- Bedroom 2
3500 x 3350mm
- Bedroom 3
3340 x 3050mm
- Balcony
9.5 sq m /102 sq ft

E1404

- 3 Bedrooms
- Internal Area
96.4 sq m / 1038 sq ft
- Kitchen/Dining Area
& Living Room
6850 x 6650mm
- Bedroom 1
4350 x 2950mm
- Bedroom 2
3500 x 3350mm
- Bedroom 3
3340 x 3050mm
- Balcony
9.5 sq m /102 sq ft



E1402

- 1 Bedroom
- Internal Area
51.9 sq m / 559 sq ft
- Kitchen/Dining Area
& Living Room
6790 x 3970mm
- Bedroom
3775 x 3050mm
- Balcony
9.5 sq m / 102 sq ft

E1401

- 2 Bedrooms
- Internal Area
75.9 sq m / 817 sq ft
- Kitchen/Dining Area
& Living Room
6745 x 4330mm
- Bedroom 1
4780 x 3500mm
- Bedroom 2
3650 x 3210mm
- Balcony
9.5 sq m /102 sq ft

E1405

- 1 Bedroom
- Internal Area
51.7 sq m / 556 sq ft
- Kitchen/Dining Area
& Living Room
7260 x 3505mm
- Bedroom
4250 x 3050mm
- Balcony
9.5 sq m /102 sq ft

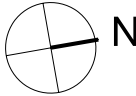
THE FORSHAW

LEVEL

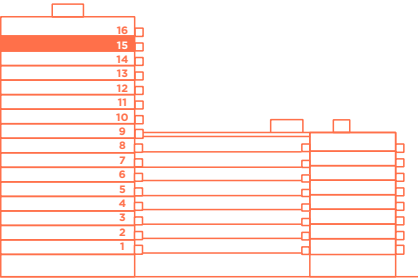
15

LEGEND

- C Cupboard
- W Wardrobe
- F Fridge/Freezer
- L Laundry
- U Utility
- B Balcony
- T Terrace

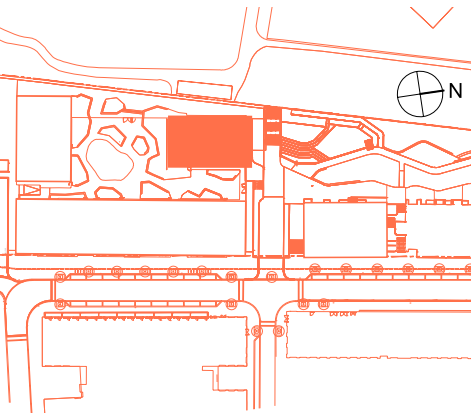


POSITION



WEST ELEVATION

LOCATION



Disclaimer
This brochure and the information contained in it does not form part of any contract, and while reasonable effort has been made to ensure accuracy, this cannot be guaranteed and no representation or warranty is made in that regard. Apartment designs and layouts are indicative only and may change. The specification of the apartments is the anticipated specification as at the date this brochure was prepared, but may be subject to change in accordance with permitted variances under the apartment sale contracts. Dimensions shown in any text or plan are approximate sizes only and actual sizes may be different once constructed (although it is not anticipated that any apartments will be reduced by more than 5% in size). Computer generated images and photos are indicative only. All sales remain subject to contract. All information regarding prospective commercial or retail tenants represents current intention only, and the final identity of the tenants may change. Furniture shown in Computer Generated images and photos is not included in sales. Riverscape is a marketing name only and will not necessarily form part of the approved postal address. Neither the agents nor any person in their employ has any authority to make or give any representation warranty or guarantee (whether written or oral) in respect of or in relation to the development (or any parts thereof).
© 2023 Riverscape

E1503

3 Bedrooms

- Internal Area**
96.4 sq m / 1038 sq ft
- Kitchen/Dining Area & Living Room**
6850 x 6650mm
- Bedroom 1**
4350 x 2950mm
- Bedroom 2**
3500 x 3350mm
- Bedroom 3**
3340 x 3050mm
- Balcony**
9.5 sq m /102 sq ft

E1504

3 Bedrooms

- Internal Area**
96.4 sq m / 1038 sq ft
- Kitchen/Dining Area & Living Room**
6850 x 6650mm
- Bedroom 1**
4350 x 2950mm
- Bedroom 2**
3500 x 3350mm
- Bedroom 3**
3340 x 3050mm
- Balcony**
9.5 sq m /102 sq ft



E1502

1 Bedroom

- Internal Area**
51.9 sq m / 559 sq ft
- Kitchen/Dining Area & Living Room**
6790 x 3970mm
- Bedroom**
3775 x 3050mm
- Balcony**
9.5 sq m / 102 sq ft

E1501

2 Bedrooms

- Internal Area**
75.9 sq m / 817 sq ft
- Kitchen/Dining Area & Living Room**
6745 x 4330mm
- Bedroom 1**
4780 x 3500mm
- Bedroom 2**
3650 x 3210mm
- Balcony**
9.5 sq m /102 sq ft

E1505

1 Bedroom

- Internal Area**
51.7 sq m / 556 sq ft
- Kitchen/Dining Area & Living Room**
7260 x 3505mm
- Bedroom**
4250 x 3050mm
- Balcony**
9.5 sq m /102 sq ft

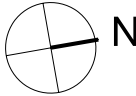
THE FORSHAW

LEVEL

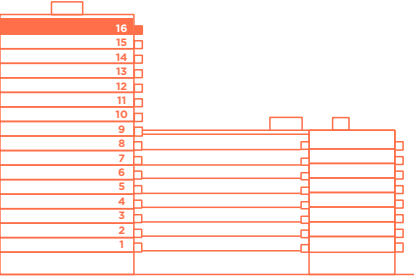
16

LEGEND

- C Cupboard
- W Wardrobe
- F Fridge/Freezer
- L Laundry
- U Utility
- B Balcony
- T Terrace

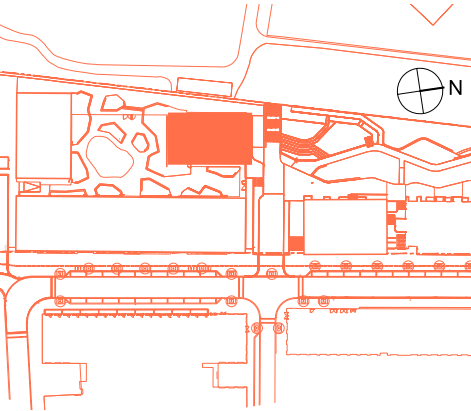


POSITION



WEST ELEVATION

LOCATION



Disclaimer
This brochure and the information contained in it does not form part of any contract, and while reasonable effort has been made to ensure accuracy, this cannot be guaranteed and no representation or warranty is made in that regard. Apartment designs and layouts are indicative only and may change. The specification of the apartments is the anticipated specification as at the date this brochure was prepared, but may be subject to change in accordance with permitted variances under the apartment sale contracts. Dimensions shown in any text or plan are approximate sizes only and actual sizes may be different once constructed (although it is not anticipated that any apartments will be reduced by more than 5% in size). Computer generated images and photos are indicative only. All sales remain subject to contract. All information regarding prospective commercial or retail tenants represents current intention only, and the final identity of the tenants may change. Furniture shown in Computer Generated images and photos is not included in sales. Riverscape is a marketing name only and will not necessarily form part of the approved postal address. Neither the agents nor any person in their employ has any authority to make or give any representation warranty or guarantee (whether written or oral) in respect of or in relation to the development (or any parts thereof).
© 2023 Riverscape

E1603

3 Bedrooms

Internal Area
96.4 sq m / 1038 sq ft
Kitchen/Dining Area & Living Room
6850 x 6650mm
Bedroom 1
4350 x 2950mm
Bedroom 2
3500 x 3350mm
Bedroom 3
3340 x 3050mm
Balcony
9.5 sq m /102 sq ft

E1604

3 Bedrooms

Internal Area
96.4 sq m / 1038 sq ft
Kitchen/Dining Area & Living Room
6850 x 6650mm
Bedroom 1
4350 x 2950mm
Bedroom 2
3500 x 3350mm
Bedroom 3
3340 x 3050mm
Balcony
9.5 sq m /102 sq ft



E1602

1 Bedroom

Internal Area
51.9 sq m / 559 sq ft
Kitchen/Dining Area & Living Room
6790 x 3970mm
Bedroom
3775 x 3050mm
Balcony
9.5 sq m / 102 sq ft

E1601

2 Bedrooms

Internal Area
75.9 sq m / 817 sq ft
Kitchen/Dining Area & Living Room
6745 x 4330mm
Bedroom 1
4780 x 3500mm
Bedroom 2
3650 x 3210mm
Balcony
9.5 sq m /102 sq ft

E1605

1 Bedroom

Internal Area
51.7 sq m / 556 sq ft
Kitchen/Dining Area & Living Room
7260 x 3505mm
Bedroom
4250 x 3050mm
Balcony
9.5 sq m /102 sq ft

SPECIFICATION 规格说明

MAIN STRUCTURE 主体结构

钢筋混凝土桩基上现浇的混凝土框架。

BUILDING ENVELOPE 建筑外墙结构

外墙采用预制的夹芯墙板，外表的混凝土采用抛光装饰。

FLOORS 地板

混凝土楼板铺设砂浆以及相应的地板（见地板）。

ROOF 屋顶

高性能的薄膜屋顶，按需求覆盖着预制屋顶或生物屋顶。屋顶采用太阳能光伏板系统。

WINDOWS 窗户

双层玻璃铝窗，外部采用耐用的粉末喷漆漆面。

STAIRS 楼梯

现浇的混凝土楼梯在公共区域带有钢制栏杆。

WALLS 墙体

分隔墙由金属墙骨构建而成，两侧都有隔音石膏板，中间有隔声层，或两面都有石膏板贴在结构混凝土表上面。内墙由金属墙骨砌成，每一侧都铺有石膏板，并在相应的地方进行隔音处理。

BALCONIES 阳台

在相应的地方安装预制混凝土制的凸阳台，地面铺有混凝土，周边为玻璃扶栏并在顶部装饰金属护顶。一楼的露台为混凝土地面，并配以金属栏杆。

CEILINGS 天花板

悬挂式石膏板天花板上涂有白色防水乳胶。主要生活区和卧室的天花板高度为2.5米。

FLOORING 地板

大厅、起居区和厨房铺设工程橡木地板。浴室和淋浴房铺设大尺寸的水磨石特色瓷砖。卧室里铺设地毯。

DECORATION 装饰

所有的内墙都涂有白色防水乳胶漆。踢脚线、门和门框涂有蛋壳白色光漆。

KITCHEN 厨房

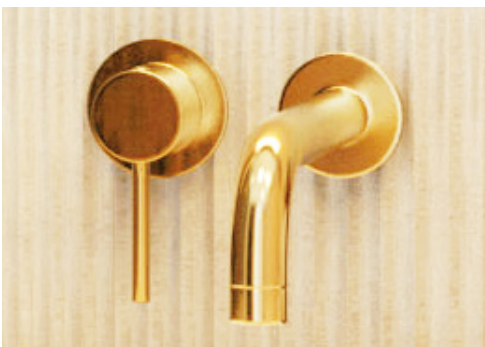
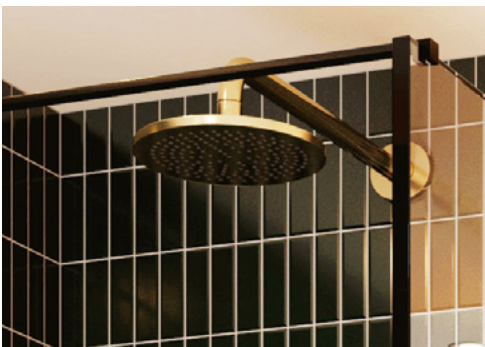
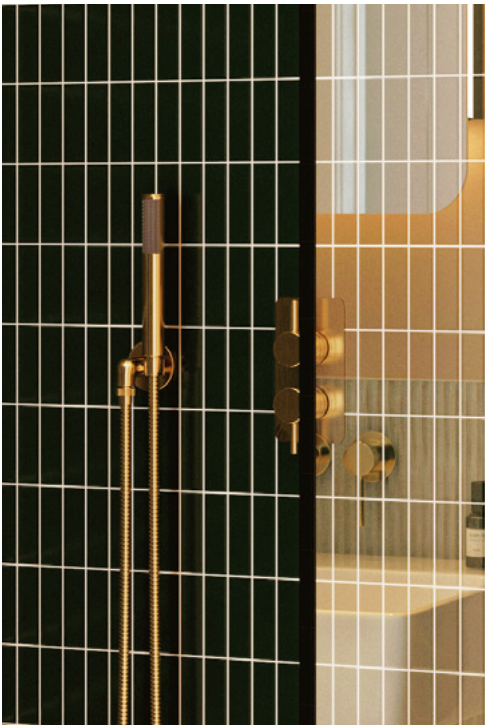
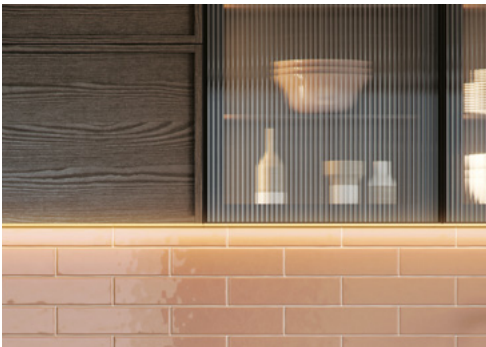
公寓配备定制设计的组合底柜和壁柜，采用染色橡木单板和层压互补的内饰。无把手的“J”型槽拉门，便于开合。高层柜上方配有特色的凹槽玻璃柜门和照明。高架橱柜底部有隐蔽的LED照明。工作台面安装有下置式不锈钢水槽和水平沥水台，以及拉丝黄铜色单把手混合水龙头。灰粉红色瓷砖挡溅板，工作台面采用复合石材。厨房安装有组合式电器，西门子或同类别的电磁炉，风扇电烤箱。组合式冰箱和洗碗机。欧洲制造的抽油烟机。组合式洗衣机/干衣机位于独立的橱柜中。特定的公寓还配有中岛式厨房。

WARDROBES 衣柜

如图所示，主卧安有镶嵌式衣柜配有特别定制的半哑光漆门。

BATHROOMS 浴室

高级亚克力浴缸，拉丝黄铜水龙头和置顶式淋浴。白色陶瓷马桶，密闭式水箱。壁挂式陶瓷洗脸盆，配有拉丝黄铜单把手壁挂式水龙头。所有浴室内部配有定制的壁挂式镜面橱柜。浴室墙面粉刷防水的乳胶漆，浴缸和淋浴区铺有光面瓷砖。石材效果的白色地砖延伸到洗漱盆四周，卫生间的墙壁铺有精致的波纹壁砖，直至防溅的高度。做了抛光处理的壁挂式加热毛巾架。



SHOWER ROOMS 淋浴房

白色优质的亚克力淋浴盆，恒温壁挂式淋浴龙头和玻璃淋浴屏。带密闭式蓄水水箱的白色陶瓷坐便。壁挂式陶瓷洗手盆，配以拉丝黄铜饰面的单把手壁挂式水龙头。所有浴室都配被特别定制的壁挂式镜面橱柜。淋浴房墙壁涂有防水乳液，浴盆和淋浴区的墙壁贴有光滑的壁砖。石材效果的白色地砖铺设至洗漱盆四周，精致的波纹壁砖铺在卫生间四周的墙壁直至防溅的高度。还配有抛光处理的壁挂式加热毛巾架。

HEATING, COOLING AND HOT WATER 供暖、制冷和热水

整个公寓的卧室和起居空间内均设有隐藏式天花板冷暖系统，提供舒适的冷暖空调。中央供暖系统提供供暖和热水，每户安有独立的计量设备。

ELECTRICS 电器

所有房间均在相应的地方安有节能灯。白色开关板和插座都符合IEE标准。由Hyperoptic提供的高速光纤宽带，客厅和主卧都提供电视/电台，电话/路由器的接点。客厅和主卧室都安装公共卫星接收器。（住需要自己负责连接并承担相关服务费。）标准配置的烟雾/热能探测器。

MANAGEMENT AND SECURITY 管理和安全

物业管理和24小时保安服务的办公室位于中央管理大楼。大楼的主入口有对讲电话。整个小区设有闭路电视监视系统。

REFUSE 垃圾

垃圾箱位于一楼。

PARKING 停车位

有限的汽车和摩托车停车位，需额外付费并视情况而定。

ELEVATORS 电梯

所有楼层都有电梯服务。

CYCLE STORE 自行车库

居民自行车存储区位于地下层和地下停车场区域内。

LEISURE 休闲设施

居民私享室内泳池、健身房、天空休息室和社区中心。

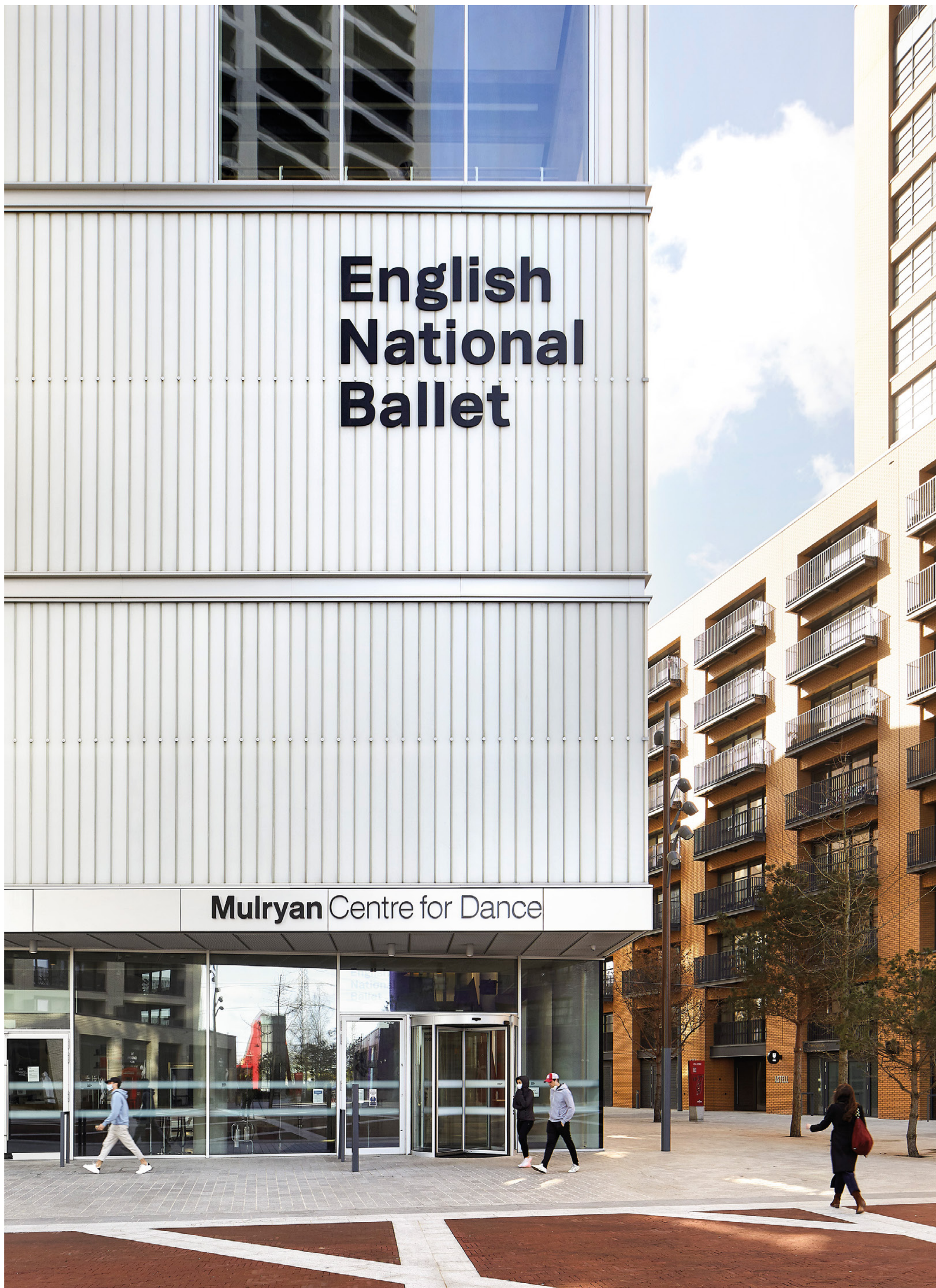
NOTE 注意事项

天然材料，如拉丝黄铜随着时间的推移而逐渐氧化会形成一层铜锈。

DISCLAIMER 免责声明

本手册及其中包含的信息并不构成免责声明的一部分。公寓设计和布局仅为示意内容，无法保证与实体一致，这也不对任何合同构成陈述或保证。尽管在制作本手册时已经做出了合理的努力以确保规格的准确性，但可能会受到允许的变化幅度的影响，因此规格可能会发生变化。公寓规格仅适用于预期的公寓大小，实际大小在建成后可能有所不同（但不会比预期缩小超过5%）。任何文本或平面图中显示的尺寸仅为近似值。计算机生成的图像和照片仅为示意性质。所有销售仍以合同为准。有关潜在商家或零售租户的信息仅代表当前意向，未来的租户可能会有所变化。计算机生成的图像和照片中的家具不包括在销售中。Riverscape仅为邮政地址。代理人或其雇员无权就开发项目作出或提供任何陈述、保证或担保。（无论是书面还是口头）关于或与该开发项目有关的任何表示，都不构成或成为开发项目的一部分。（©2023 Riverscape.）





BALLYMORE & OXLEY 巴利摩&豪利

作为欧洲和亚洲最大的房地产重建项目的先驱者，我们的开发项目在场所塑造、建筑、设计和城市规划方面不仅打破记录，还为业界树立了新的标杆。

BALLYMORE 巴利摩

巴利摩仍然是一家家族企业，但在国际上享有项目创新的声誉，这些项目突破了行业界限，为城市注入了新的活力。我们相信，我们所销售的不仅仅是一个居住的空间。我们称我们的开发项目称为“度假村”，我们深知，您外部环境的体验与您居住的家同样重要。我们倾心打造完美的社区环境，在成熟的地区之外寻找和重建新的开发地点，包括伦敦一些最具变革性的城市开发项目。



Wardian, London



London City Island, London



Oxley Tower, Singapore



Oxley Towers, Kuala Lumpur City Centre, Malaysia

OXLEY 豪利

豪利控股有限公司是一家新加坡本土的房地产开发公司，专门从事优质住宅、商业和工业项目。自成立以来，集团快速增长，业务覆盖国内外，目前，集团的业务遍及全球12个国家。

集团拥有多元化的投资组合，包括在新加坡、英国、爱尔兰、塞浦路斯、柬埔寨、马来西亚、印度尼西亚、中国、缅甸、澳大利亚、日本和越南的开发和投资项目。豪利集团的专长并不局限在于房地产开发，该集团还在缅甸提供项目管理和咨询方面的专业服务。



Bishopgate, London



Guinness Quarter, Dublin



Riverfront Residences, Singapore



Kent Ridge Hill Residences, Singapore



Goodluck Hope, London



The Brentford Project, London



The Peak, Cambodia



Novotel on Stevens, Mercure on Stevens, Singapore



Embassy Gardens, London



Dublin Landings, Dublin



Mayfair Gardens, Singapore



Affinity at Serangoon, Singapore

